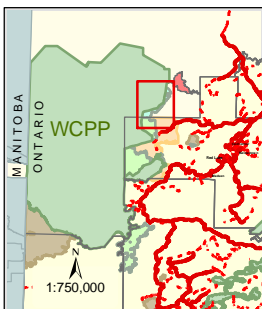




**PEISK LAKE PARK ADDITION - (WF-LUS) - Zoning**



**Woodland Caribou Provincial Park**

Scale: 1:100,000  
 © 2006, Queen's Printer for Ontario. Published August, 2006.

This map is illustrative only. Do not rely on it as being a precise indicator of routes, locations of features, nor as a guide to navigation.  
 Projection: UTM Grid Zone 15  
 Datum: North American Datum 1983  
 Base Derived From: NRVIS (Natural Resource Values Information System)  
 Produced by: Red Lake District - KMM



**Base Features**

- |  |   |               |                                |
|--|---|---------------|--------------------------------|
|  | Primary Road                                  |               | Forest Management Unit         |
|  | Secondary Road                                |               | Valhalla Adjacent Area         |
|  | Planning Area                                 | <b>Zoning</b> |                                |
|  | River \ Stream                                |               | Seasonal Air/Snowmobile Access |
|  | Lake  |               | Seasonal Snowmobile Corridor   |
|  | Provincial Park                               |               |                                |
|  | Recommended Park Addition (OLL)               |               |                                |
|  | Peisk Lake Recommended Park Addition (WF-LUS) |               |                                |
|  | Dedicated Protected Area (WF-LUS)             |               |                                |
|  | Enhanced Management Area                      |               |                                |