



# North Beach and Lake on the Mountain

Terms of Reference

Copies of this publication are available online at: <http://www.ontarioparks.com/>

Planning questions can be addressed to:

**Assistant Park Planner  
Ontario Parks  
Southeastern Zone Office  
51 Heakes Lane  
Beechgrove Complex  
Kingston, Ontario  
K7M 9B1  
(613) 531-5722**

**Superintendent  
Sandbanks Provincial Park  
RR1  
Picton, Ontario  
K0K 2T0  
(613) 393-3319**

**Approval Statement**

I am pleased to approve the North Beach Provincial Park and Lake on the Mountain Provincial Park Terms of Reference. This terms of reference meet all requirements set out in the *Ontario Provincial Park Management Planning Manual* (1994) and will effectively guide the process.

*Original Signed by Adair Ireland-Smith*

May 27, 2004

Adair Ireland-Smith  
Managing Director  
Ontario Parks

Date

## **1.0 Background**

Management plans provide long term direction for the protection, development, management, and use of park resources. This terms of reference will provide the planning framework for two recreation class parks within the Southeastern Zone of Ontario Parks. This joint planning process will streamline management planning, while still providing two separate management plans to guide the direction of each park for a 20 year time period.

### ***North Beach***

North Beach Provincial Park is a recreation class park that provides day-use services to park visitors (Figure 1). The park encompasses 89.4 ha, and is situated on a baymouth sandbar on the shores of Lake Ontario in Prince Edward County within Ecodistrict 6E-15. The sandbar is approximately 1400 m long and 260 m wide.

The sand dunes are of biological significance, and are part of a system of baymouth sandbars, found at North Bay, Pleasant Bay, and Huycks Bay. The sand dune formations at North Beach were derived from glacial sediments that were reworked by waves and rising water levels of proglacial lakes in the Lake Ontario Basin. There are no bedrock exposures within the park, but outcrops of the Lindsay Formation occur on either side of the park along the shore.

The complete dune system is an important staging area for waterfowl, and is also noted as an active feeding area for colonial water birds. Pleasant Bay and Huycks Bay both contain provincially significant wetlands. The Pleasant Bay wetland encompasses 299 ha, of which 85% is in public ownership. The Huycks Bay wetland is 245 ha, of which 15% is in public ownership. Provincially and regionally rare species have been noted in the area, including the Black Tern, but no recent studies have confirmed this.

An interim management statement prepared for the park in 1996 will continue to provide custodial management direction until the park management plan is approved. Park management planning has not previously been initiated for the park.

Through this planning process, specific issues will be identified, by the planning team and through public and Aboriginal consultation. Specific issues that have been identified to date and will be considered and addressed include:

- Park facilities and development (e.g. picnic shelter),
- Methods for protection, restoration, or rehabilitation of the dune system,
- Designated access points. There is currently one designated access point at the main park gate; however, some pedestrian access occurs at other points, and,
- Address the use of all-terrain vehicles. All-terrain vehicles are entering the park in the off season and damaging fragile dune habitat.

Crown-owned land adjacent to the park at Pleasant Bay and Huycks Bay is being considered for addition to North Beach Provincial Park (Figure 1).

### ***Lake on the Mountain***

Lake on the Mountain is a recreation class park with day-use facilities. The park is located on the Bay of Quinte, on the crest of a 60 m high slope above the community of Glenora in Prince Edward County (Figure 2). The regulated park area is approximately 104 ha, of which 102 ha is the lake basin. The remaining 2 ha are on land, and include 0.75 ha adjacent to the lake with parking and picnicking facilities, as well as an additional 1.25 ha of land along a wooded escarpment. The picnic area provides excellent scenic views of the lake and the Bay of Quinte. The lake basin was formed by a collapsed doline (large sinkhole), and is of significant geological interest. Water is most likely replenished through ground water flow from surrounding wetlands, which are in private ownership.

A fisheries assessment has not been completed since 1955, although a nutrient enrichment study was carried out in 1974, and an angling survey was conducted in the 70's to determine angling pressure after the fishery was closed for 30 years.

The lake has high cultural significance for the Mohawks of the Bay of Quinte.

An interim management statement prepared for the park in 1994 will continue to provide custodial management direction until the park management plan is approved. Park management planning has not previously been initiated for the park.

Through the planning process, issues will be identified by the planning team and through public and aboriginal consultation. Issues identified to date that will be considered and addressed include:

- Effects of land use practices along the shoreline of the lake on water quality and lake habitat,
- Need to clarify land tenure, including confirmation of the park boundary along the lake shoreline and resolution of encroachment issues,
- Park boundary, specifically in the area of the Glenora Fisheries Station,
- Impacts on water quantity and quality from water taking. Water from Lake on the Mountain is currently being used to service the Glenora Fisheries Research Station, the park washroom and several adjacent private properties,
- Policy for motorized boating, and
- Need for a complete lake survey, including the documentation of chemical and natural attributes.

Through the management planning process, policies for the following topics will be developed for both North Beach and Lake on the Mountain:

- Confirmation of each park's role, significance and classification within the provincial parks system,
- Confirmation of park zoning based on resource significance and recreational potential to ensure effective management of natural, cultural and recreational resources,
- Guidance for the preparation of subsequent resource stewardship plans required to implement park policies and achieve program objectives,

- Rationale and priorities for capital development projects and park operations, and
- Ensure that economic, social, cultural and environmental benefits are maximized for each park in keeping with Ontario Parks' priorities, and acknowledge the economic benefits for Prince Edward County.

## 2.0 Planning Area

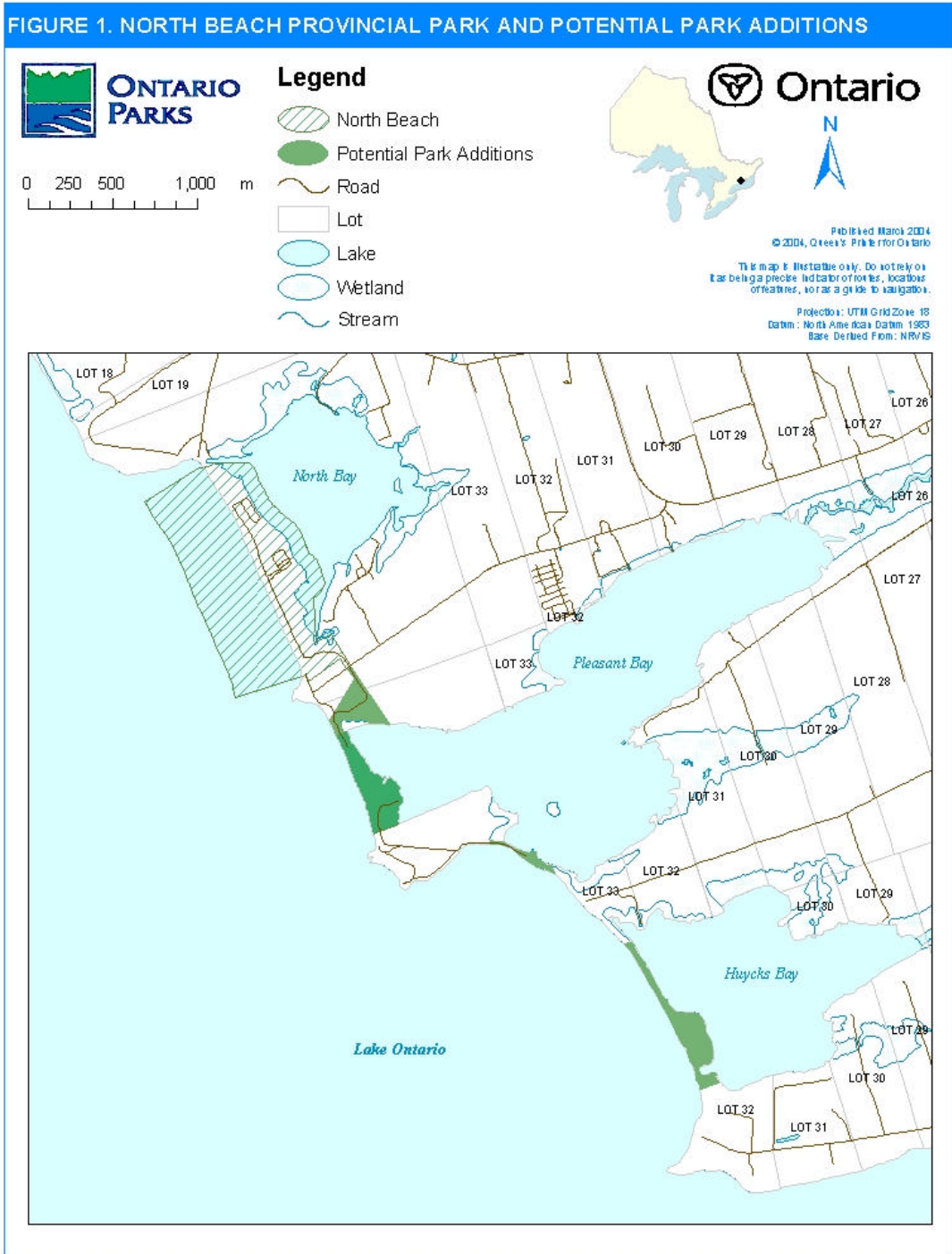
The planning area for **North Beach** will include all of the lands and waters regulated under the *Provincial Parks Act* as North Beach Provincial Park. The park boundary encompasses 89.4 ha of land and water. Approximately 26.3 ha are lands along the baymouth sandbar, which is approximately 260 m wide and 1400 m long. The remaining 63.1 ha of the park extends into the waters of Lake Ontario for 402 m and North Bay for 91 m.

The planning area for North Beach will also include the lands being considered for addition to the park. These include the Crown-owned beaches at Pleasant Bay and Huycks Bay, as well as the parcel of land south and east of Pierson Point. The unpatented Crown land of Pleasant and Huycks Bay is 17.8 ha in size, and the acquired Crown land south and east of Pierson Point is 5.6 ha.

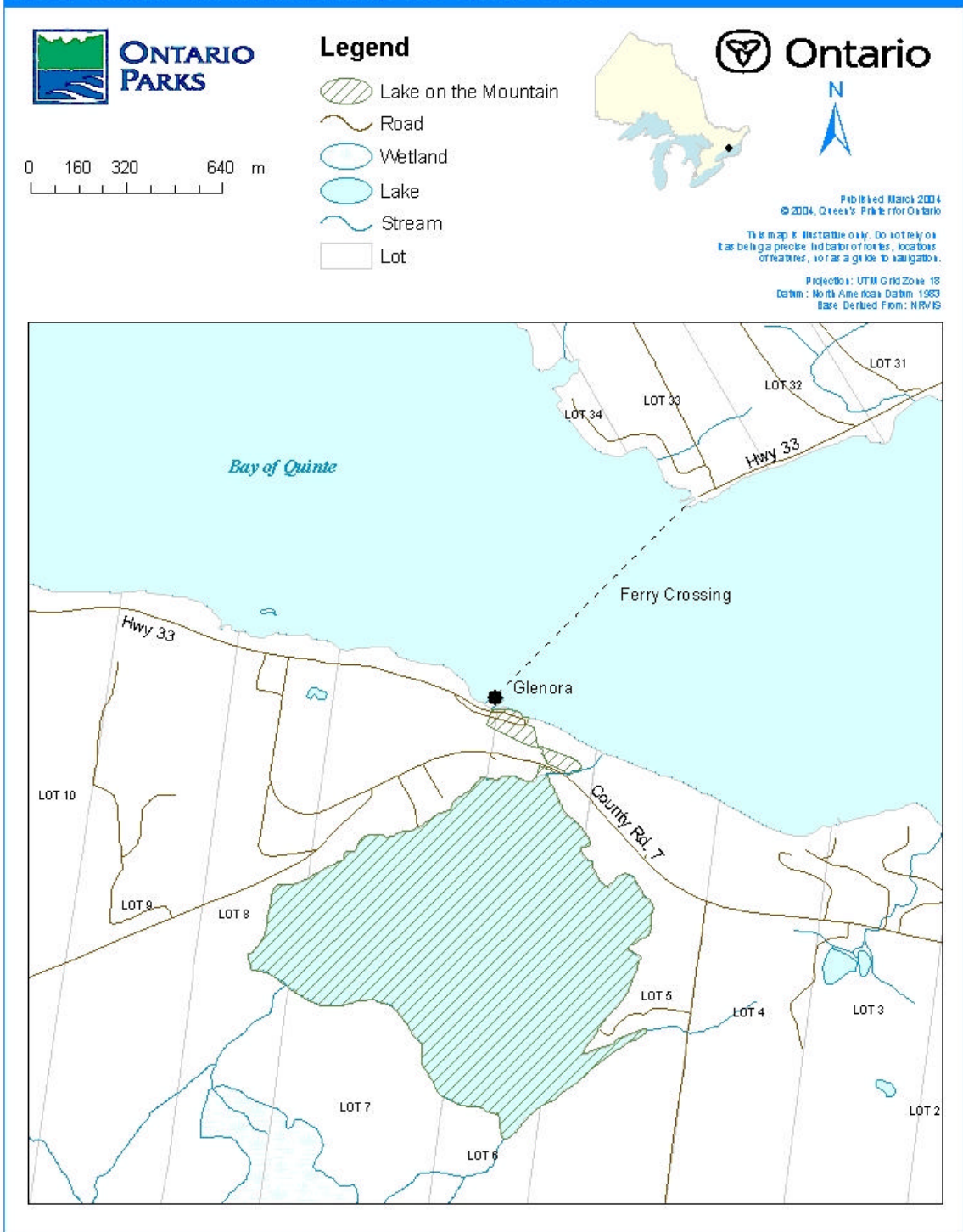
The planning area for **Lake on the Mountain** will include all of the lands and waters regulated under the *Provincial Parks Act* as Lake on the Mountain Provincial Park. This is approximately 104 ha, including the lake basin up to the high water mark, as well as 2 ha of land. Adjacent landowners that rely on the lake for water will also be considered during the planning process.

Ontario Parks is committed to an ecosystem management approach during park planning and management and consideration will be given during the planning process to the greater ecosystem. The greater ecosystem for North Beach and Lake on the Mountain could be defined as the wetlands adjacent to the parks. In addition, the complete baymouth sandbar dune system along Lake Ontario is considered to be part of the greater ecosystem for North Beach. Complementary land use approaches by owners of adjacent properties may benefit the natural heritage features of the two parks and the greater ecosystem. Consideration will also be given to the County of Prince Edward regarding tourism development in the area.

Some provincially significant private lands adjacent to North Beach and/or Lake on the Mountain may be eligible for the Conservation Land Tax Incentive Program (CLTIP). The management plans for the two parks will be developed in consultation with the public, including each park's neighbours, throughout the planning process. This approach is a cooperative and participatory one, and does not imply provincial control on private property rights. Ontario Parks would not consider acquiring private land unless property that would enhance the values of either park is offered for sale by willing vendors.



**FIGURE 2. LAKE ON THE MOUNTAIN PROVINCIAL PARK**



### 3.0 Planning Team

The planning team will consist of:

- Assistant Park Planner, Southeastern Zone, Ontario Parks (planning team leader),
- MNR Representative, Peterborough District Office,
- Park Superintendent, Sandbanks Provincial Park, and
- Park Planner, Southeastern Zone, Ontario Parks.

Other planning team members may be added throughout the planning process at the discretion of the planning team leader.

### 4.0 Integration

Integration of the various resource management and stewardship interests will be addressed during the planning process. In addition, the planning team may call on other MNR staff, agencies or organizations for advice, comments, and information as needed throughout the planning project.

The following internal documents and reports, and any updates to them, will be used to guide the planning project and provide information:

- Ontario Provincial Parks Planning and Management Policies (1992),
- Ontario Provincial Park Management Planning Manual (1994) and planning directives,
- North Beach Interim Management Statement (1996),
- Lake on the Mountain Interim Management Statement (1994),
- Exemption Order MNR 59/2 Made Under the *Environmental Assessment Act*,
- Life Science Areas of Natural and Scientific Interest in Site District 6E-15,
- Ontario Parks Day Visitor Survey Results,
- Coordinated Program Strategy for the Ministry of Natural Resources in Southern Ontario (1982),
- Napanee District Land Use Guidelines (1983), and
- Beyond 2000, Ministry of Natural Resources Strategic Directions (2000).

External integration may include, but is not limited to:

- Prince Edward County,
- Friends of Hillier Beaches,
- Ontario Nature, and local affiliates, and
- Ontario Federation of Anglers and Hunters, and local affiliates.

The following external documents, and any updates to them, will be used to guide the planning project and provide information:

- Official Plan for the Municipality of the County of Prince Edward, and
- Draft Co-Management Plan of the Hillier Beaches.

## **5.0 Planning Process and Schedule**

The following tasks and schedule, summarized in Table 1, are intended to guide the project to completion of approved management plans for North Beach and Lake on the Mountain Provincial Parks.

### **Stage 1: Terms of Reference**

- Terms of reference for planning project are revised and approved by the Managing Director, Ontario Parks.
- Planning team to guide the project is selected and briefed on issues and concerns.
- Planning team consolidates background information files for use in planning project.
- Mailing list for public consultation is compiled. This list will be reviewed and updated before each mailing.
- Planning team prepares and distributes materials for public notice and invitation to participate in the planning project.
- Public input is summarized and analyzed.

### **Stage 2: Background Information, Issues and Plan Alternatives**

- Background information files are consolidated. Planning team prepares issues and plan alternatives document summarizing significant issues to be addressed through the planning process and proposing policies.
- Issues and plan alternatives document is published and distributed for public inspection; opportunity for public to review background information is provided.
- Public input is summarized and analyzed.
- Planning team evaluates public input, and prepares a summary of public input.

### **Stage 3: Preliminary Park Management Plan**

- Planning team reviews draft policies and develops preliminary park management plans for each park for approval by Ontario Parks.
- Planning team prepares, prints, and distributes preliminary park management plans.
- Public input is solicited on draft policies in preliminary park management plans. Input is summarized.

### **Stage 4: Approved Park Management Plan**

- Planning team acts on input, revising each plan as needed.
- Planning team prepares final park management plans for Ontario Parks approval.
- Upon approval, the North Beach Provincial Park Management Plan and the Lake on the Mountain Provincial Park Management Plan are printed and distributed with final notice of opportunity to inspect the approved plan.

## 6.0 Consultation and Communications

During the term of the planning process, the public, local Aboriginal groups, various interest groups and stakeholders will be notified of the following:

- Invitation to participate in the planning process and to inspect the terms of reference,
- Background information consolidated on file, and available for review,
- Opportunity to inspect the issues and plan alternatives document,
- Opportunity to inspect the preliminary park management plans, and
- Opportunity to inspect the approved park management plans.

Consultation will occur at all stages of the planning process, as noted in Table 1, and will be in accordance with the requirements of the *Ontario Provincial Park Management Planning Manual* (1994).

The public notice will be in the form of:

- Direct written invitations to local and regional offices of relevant government ministries, municipalities, interest groups, First Nations, adjacent land owners, and other stakeholders including individual members of the public on the mailing list which has been compiled. Proposal and decision file notices will be posted on the Electronic Registry as required under the *Environmental Bill of Rights*.
- Paid notice in local media to advise the general public of the opportunity to become involved.

Public open houses, meetings and presentations may be held as required throughout the process. If optional planning steps are necessary, additional public consultation opportunities will be provided to address them.

## 7.0 Planning Team Responsibilities

In addition to preparing the park management plan and its various components, the planning team will be responsible for direct consultation with interest groups, municipalities, local Aboriginal groups, and the general public. Staff responsibilities will be as follows:

The planning team will be responsible for determining what Aboriginal interests there may be in the area of the park early in this planning project. Any interests raised in these consultations will be addressed in later phases of the planning process. The planning team will discuss its findings with appropriate ministry staff and develop a strategy to address aboriginal interests for the remainder of the project.

The Assistant Park Planner, Ontario Parks, Southeastern Zone will be the lead representative for Ontario Parks in preparation of planning documents, public consultation and in working with any consultants, dealing with invoices, requests for information, and providing general guidance and advice on the project.

Other members of the planning team will assist the Assistant Park Planner in various tasks and responsibilities. Other planning team members may be assigned various tasks throughout the project.

Final drafts of planning materials will be approved by the Manager, Southeastern Zone, Ontario Parks and sent to the Managing Director of Ontario Parks for review and approval.

### **8.0 Budget**

A total of \$20,000 is required for the project, of which \$4,000 has been received for the completion of Stage 1 and the initiation of Stage 2. Expenses are for information gathering, map making, copying, mailing, public consultation, and preparation of planning documents.

Table 1: Summary of Lake on the Mountain and North Beach: Park Management Planning Schedule

Stage in Planning Process	Description	Consultation & Communications	Proposed Timetable
Stage 1: Terms of Reference	<ul style="list-style-type: none"> <li>• Identify scope of the planning program, and prepare terms of reference</li> <li>• Prepare invitation to participate</li> <li>• Prepare contact database (mandatory contact list, adjacent landowners etc.)</li> </ul>	<ul style="list-style-type: none"> <li>• An initial invitation to participate will be mailed out as public notice</li> <li>• Paid notice in local media</li> <li>• Environmental Registry (ER) proposal notice posting</li> </ul>	Stage 1 initiated Spring 2004 3 – 4 months
Stage 2: Background Information, Issues and Plan Alternatives	<ul style="list-style-type: none"> <li>• Gathering and review of background information</li> <li>• Issues and plan alternatives document is prepared and distributed</li> <li>• Evaluation and summary of public input</li> </ul>	<ul style="list-style-type: none"> <li>• Open house, meetings and presentations as needed</li> <li>• Notice of opportunity to inspect background information as well as the issues and plan alternatives document and request public input</li> <li>• Public notice mailed</li> <li>• Paid notice in local media</li> <li>• ER proposal notice posting</li> </ul>	4 – 6 months after the completion of Stage 1
Stage 3: Preliminary Park Management Plan	<ul style="list-style-type: none"> <li>• Preparation and review of draft policies</li> <li>• Preparation of preliminary park management plans for review and approval</li> <li>• Input solicited and summarized</li> </ul>	<ul style="list-style-type: none"> <li>• Preliminary park management plans distributed</li> <li>• Open house, meetings and presentations as required</li> <li>• Public notice mailed</li> <li>• Paid notice in local media</li> <li>• ER proposal notice posting</li> </ul>	4 – 6 months after the completion of Stage 2
Stage 4: Approved Park Management Plan	<ul style="list-style-type: none"> <li>• Prepare final management plans for approval. (Content requirements defined by Ontario Provincial Park Management Planning Manual)</li> </ul>	<ul style="list-style-type: none"> <li>• Distribution of reports to key groups and individuals</li> <li>• Public notice mailed</li> <li>• Paid notice in local media</li> <li>• ER decision notice posting</li> </ul>	3 – 5 months after the completion of Stage 3