

ALGOMA HEADWATERS SIGNATURE SITE



PRELIMINARY STRATEGY

ALGOMA HEADWATERS PROVINCIAL PARK

GOULAIS RIVER PROVINCIAL PARK

AUBINADONG – NUSHATOGAINI RIVERS PROVINCIAL PARK

RANGER NORTH CONSERVATION RESERVE

FEBRUARY 2005

©2005, Queen's Printer for Ontario
Printed in Ontario, Canada

This publication may be obtained on-line at:
www.ontarioparks.com/english/algom_planning.html or
from the address noted below:

Ministry of Natural Resources
64 Church Street
Sault Ste. Marie, Ontario
P6A 3H3
(705) 949-1231

Current publications of the Ontario Ministry of Natural Resources,
and price lists, are available from the address noted below. Bulk
orders may involve charges.

Ministry of Natural Resources
Natural Resources Information Centre
300 Water Street
Peterborough, Ontario
K9J 8M5

Telephone inquiries about ministry programs and services should
be directed to the Natural Resources Information Centre:

General Inquiry 1-800-667-1940

Find the Ministry of Natural Resources on-line at:

www.mnr.gov.on.ca

Copies of this publication are also available in French.

Cette publication qui porte le titre de "*Region caracteristique des
eaux d'amont d'Algoma: Strategie preliminaire*" est egalement
disponible en francais. Pour obtenir un exemplaire, veuillez
composer

le (705) 949-1231 ou ecrivez a l'adresse suivante:

Ministere des Richesses Naturelles
64, Rue Church,
Sault Ste. Marie, Ontario
P6A 3H3

ou en ligne: www.ontarioparks.com/french/algom_planning.html

APPROVAL STATEMENT

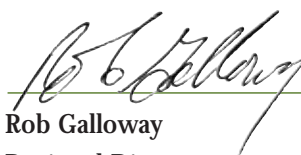
We are pleased to approve the Algoma Headwaters Signature Site Preliminary Strategy as part of the process to create an overall strategy for the protection and management of this significant area. This preliminary strategy reflects the intent of the Ministry of Natural Resources (MNR) to protect heritage features and values and to maintain and develop high quality opportunities for outdoor recreation and heritage appreciation for the residents of Ontario and visitors to the province.

This preliminary strategy for the Algoma Headwaters will be used in the public review of how the ministry proposes to guide and direct resource stewardship, operations and development of four protected areas: Algoma Headwaters Provincial Park, Goulais River Provincial Park, Aubinadong - Nushatogaini Rivers Provincial Park and Ranger North Conservation Reserve. It frames management of protected areas around their designation, goals, and objectives. In addition, it proposes a phasing in of the implementation of all the direction in the strategy to provide a level of service for each protected area. The preliminary strategy provides a summary of the public consultation carried out during the planning process.

An approved strategy will be written after we have consulted on and considered the comments that are received on this preliminary strategy. The approved strategy will guide future resource stewardship, operations and development of the Algoma Headwaters Signature Site.



Adair Ireland-Smith
Managing Director
Ontario Parks



Rob Galloway
Regional Director
Northeast Region

A VISION STATEMENT HAS BEEN PREPARED FOR THE ALGOMA HEADWATERS SIGNATURE SITE TO DEFINE ITS LONG-TERM STRATEGIC DIRECTION. ALL PLANNING, MANAGEMENT AND OPERATIONS OF THE SIGNATURE SITE WILL BE IN KEEPING WITH THE INTENT OF THIS VISION STATEMENT.

VISION FOR
ALGOMA HEADWATERS SIGNATURE SITE

“The Algoma Headwaters Signature Site will protect the ecological integrity of the area’s natural and cultural landscapes, while providing present and future generations with high quality, year-round recreational opportunities. In a remote, yet accessible setting, the signature site provides the opportunity to experience old growth forests, scenic waterways, and Aboriginal heritage values. The site is dedicated in perpetuity to the people of Ontario and others for their enjoyment, education and benefit.”

TABLE OF CONTENTS

1.0	INTRODUCTION	1
1.1	WHAT IS A SIGNATURE SITE?.....	3
2.0	SUMMARY OF PLANNING TOPICS.....	4
2.1	ACCESS / MECHANIZED TRAVEL	4
2.2	RECREATION	4
2.3	COMMERCIAL TOURISM	4
2.4	FISHERIES MANAGEMENT	5
2.5	HUNTING.....	5
2.6	WINTER USE.....	5
2.7	REHABILITATION OF SITES	5
2.8	IMPLEMENTATION	5
3.0	PROTECTED AREA POLICY CONTEXT	6
3.1	A STRATEGY TO INTEGRATE PROTECTED AREAS.....	6
3.2	PROVINCIAL PARKS	7
3.3	CONSERVATION RESERVES.....	8
3.4	FOREST RESERVES.....	9
4.0	PROTECTED AREA POLICY	10
4.1	PROVINCIAL PARK CLASSIFICATION	10
4.2	CONSERVATION RESERVE.....	11
4.3	GOAL AND OBJECTIVES	11
4.3.1	ALGOMA HEADWATERS SIGNATURE SITE OBJECTIVES.....	11
4.3.2	SPECIES AT RISK	12
5.0	PROTECTED AREAS BOUNDARY AND LAND USE.....	13
5.1	TOURISM LAKES	15
6.0	PARK ZONING 16	
6.1	ZONING POLICIES	16
6.1.1	NATURAL ENVIRONMENT ZONES	17
6.1.2	WILDERNESS ZONE	18
6.1.3	NATURE RESERVE ZONE.....	19
6.1.4	ACCESS ZONES	20
6.1.5	DEVELOPMENT ZONES	21
6.1.6	HISTORICAL ZONES.....	21



7.0	RESOURCE STEWARDSHIP POLICIES	22
7.1	ABORIGINAL AND TREATY RIGHTS	22
7.2	LAND MANAGEMENT	22
7.2.1	ADJACENT LAND USE	23
7.2.2	FOREST OPERATIONS	23
7.2.3	MINING AND MINERAL EXPLORATION	24
7.2.4	LAND DISPOSITION	24
7.2.5	COMMERCIAL TOURISM	24
7.2.6	WASTE MANAGEMENT	25
7.3	VEGETATION MANAGEMENT	25
7.3.1	FUELWOOD HARVESTING	26
7.3.2	FIRE MANAGEMENT	26
7.4	WILDLIFE MANAGEMENT	27
7.4.1	HUNTING AND BEAR MANAGEMENT AREAS	27
7.4.2	TRAPPING	27
7.5	AQUATIC ECOSYSTEMS MANAGEMENT	28
7.5.1	WATER MANAGEMENT	28
7.5.2	SAYMO LAKE DAM	28
7.5.3	FISHERIES MANAGEMENT	29
7.6	CULTURAL RESOURCES	30
8.0	OPERATIONS POLICIES	31
8.1	ACCESS	31
8.1.1	AUTHORIZED ROADS	31
8.1.2	CLOSED ROADS	33
8.1.3	SNOWMOBILES, ATVs AND OFF ROAD VEHICLES	33
8.1.4	AIRCRAFT LANDING	35
8.2	RECREATION MANAGEMENT	35
8.2.1	CANOE ROUTES AND HIKING TRAILS	35
8.2.2	BOAT CACHES	36
8.2.3	CAMPING	36
8.3	HERITAGE EDUCATION	37
8.4	RESEARCH AND MONITORING	37
9.0	DEVELOPMENT POLICIES	39
9.1	STRATEGY IMPLEMENTATION	39
9.2	PHASE-IN IMPLEMENTATION	40
9.3	PARTNERSHIPS	43
9.4	MARKETING	43
10.0	STRATEGY AMENDMENT AND REVIEW	45
11.0	SUMMARY OF PUBLIC CONSULTATION	46
12.0	SELECTED REFERENCES	47

LIST OF TABLES

TABLE 1A:	PHASE 1 – IMPLEMENTATION	41
TABLE 1B:	PHASE 2 – IMPLEMENTATION	43
TABLE 2A:	FOREST INDUSTRY ACCESS ON THE ALGOMA FOREST	56
TABLE 2B:	FOREST INDUSTRY ACCESS ON THE NORTH SHORE FOREST	57
TABLE 3:	RECREATIONAL ROADS IN ALGOMA HEADWATERS SIGNATURE SITE	58

LIST OF FIGURES

FIGURE 1:	REGIONAL CONTEXT	83
FIGURE 2:	PROTECTED AREA DESIGNATIONS	84
FIGURE 3:	EXISTING DEVELOPMENT	85
FIGURE 4:	TRAPLINES	86
FIGURE 5:	BEAR MANAGEMENT AREAS	87
FIGURE 6:	ZONING	88

APPENDICES

APPENDIX A:	GLOSSARY OF TERMS	53
APPENDIX B:	FOREST ACCESS ROADS	56
APPENDIX C:	CROWN LAND USE PLANNING ATLAS (CLUPA)	59



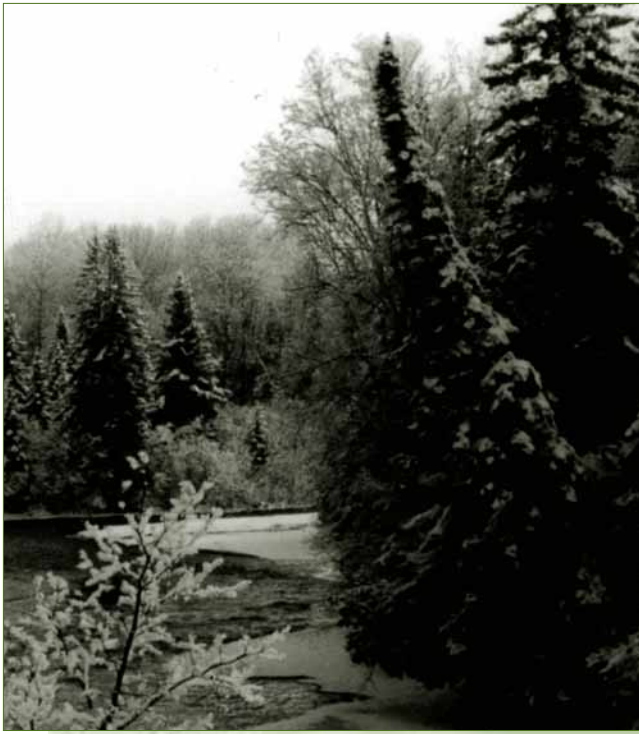
CONSIDERATION OF THE MINISTRY OF NATURAL RESOURCES
STATEMENT OF ENVIRONMENTAL VALUES
UNDER THE ENVIRONMENTAL BILL OF RIGHTS

In accordance with the provisions of The Environmental Bill of Rights (EBR), the Ministry of Natural Resources has prepared a Statement of Environmental Values. This Statement of Environmental Values will consider the Environmental Bill of Rights whenever decisions are being made which might significantly affect the environment, including decisions made during this planning process for the Algoma Headwaters Signature Site Strategy.

The primary purpose of the Environmental Bill of Rights is *“to protect, conserve and, where reasonable, restore the integrity of the environment.”* This broad statement of purpose translates into four objectives in the ministry’s Statement of Environmental Values:

- To ensure the long-term health of ecosystems by protecting and conserving our valuable soil, aquatic resources, forests and wildlife resources, as well as their biological foundations
- To ensure the continuing availability of natural resources for the long-term benefit of the people of Ontario, leaving future generations a legacy of the natural wealth that we enjoy today
- To protect natural heritage and biological features of provincial significance
- To protect human life, the resource base and physical property from the threats of forest fires, floods and erosion

The ministry’s Statement of Environmental Values has been considered in the development of the Preliminary Strategy for the Algoma Headwaters Signature Site.



GOULAIS RIVER

1.0 INTRODUCTION

The Algoma Headwaters Signature Site is an example of Ontario's scenic shield landscape. It is a mosaic of rolling hills, forests and wetlands interconnected with a network of waterways, and an area of significant cultural heritage used by First Nations peoples for thousands of years. The site is approximately 90 kilometers northeast of Sault Ste. Marie and 50 kilometres south of Chapleau, with the Goulais River portion extending almost as far south as the community of Searchmont (Figure 1).

Algoma Headwaters Signature Site encompasses several new protected areas within MNR's Sault Ste. Marie and Chapleau administrative districts¹. This important group of interconnected protected areas (Figure 2) includes approximately 60,000 hectares:

- Algoma Headwaters Provincial Park (Natural Environment Class; 42,745 hectares) (Site ID # P273)
- Goulais River Provincial Park (Waterway Class; 5,084 hectares) (Site ID #P253)
- Aubinadong-Nushatogaini Rivers Provincial Park (Waterway Class; 4,928 hectares) (Site ID# P277)
- Ranger North Conservation Reserve (7,020 hectares) (Site ID# C1914)

The three provincial parks were established in 2003 and regulated under Ontario Regulation 210/03, while Ranger North Conservation Reserve was established in 1997 under Ontario Regulation 53/97.

In addition, there are 11 mining leases and claims (or portions thereof) with a total area of 627 hectares in Gapp Township. These mining lands abut the boundary of Algoma Headwaters Provincial Park, and are collectively referred to as the Algoma Headwaters Forest Reserve (F273). Forest Reserve lands are not considered to be part of the signature site. The intent is to add these lands to the protected areas, when they are retired through normal processes (Ontario's Living Legacy Land Use Strategy, 1999). (Refer to Sections 3.4 and 7.2.3).

Road access to the signature site is from the south and the east. The most commonly used roadways are the Ranger Lake Road and the Searchmont Highway, which allow access to the site by the Whitman Dam Road and the Laughing Lake Road. The site can also be reached from the east from Highway 129 (which links Thessalon to Chapleau), then by the Ranger Lake Road to the Domtar Road, and finally to the Ranger North Road East - northeast side (Figure 3).

1. To enhance readability and understanding of this strategy, a *Glossary of Terms* is found in Appendix A.

The area north of Sault Ste. Marie contains some of the largest remaining stands of mixed pine and hardwood old growth forests in Ontario, core areas of which are captured within the signature site. Some of the largest and oldest stands of white and red pine in Ontario (up to 350 years old and 15 stories high) are located around Megisan, Gord, Prairie Grass and Dyson Lakes.

Significant values and features of Algoma Headwaters Signature Site include:

- old growth red and white pine, sugar maple and yellow birch, and black spruce communities intermixed within this area of transition forests of the Great Lakes-St. Lawrence and Boreal Forest Regions
- significant surficial geological features, such as: a regionally significant portion of the Cartier moraine, provincially significant deltaic valley 'train' deposits of the west Aubinadong River, and a provincially significant ice contact delta on the Goulais River
- a diversity of plants and animals representative of the Great Lakes-St. Lawrence and Boreal

forest regions, including species at risk

- traditional Aboriginal values, including trails, campsites and place names
- extensive undeveloped landscape, with a variety of lakes and an abundance of interconnecting waterways
- a range of recreational opportunities, including fishing, canoeing, boating, hiking, hunting, snowmobile and ATV travel (on designated trails), dispersed backcountry camping and wildlife viewing.

Many areas in the southern-most section of the signature site are accessible by road, however, the central and northeast reaches of the site are mostly remote and undeveloped, and can only be accessed by air, canoe or on foot.

The Ranger North Conservation Reserve is an integral part of the Algoma Headwaters Signature Site. It was established in 1997 to protect significant old growth pine ecosystems. The Ranger North Conservation Reserve contains three significant old growth pine areas that have been identified in past old growth studies (MNR, 1990),



WHITMAN DAM FALLS

including Quinn Lake, Bliss Lake, and the eastern half of the Galloway Lake Forests. It is located on the western side of the signature site between the Ranger North Road West and the Point Lake Road, and occupies portions of Gapp, Gaudry, Wlasy, Bracci, Schembri and Scriven townships (Figure 2).

This signature site strategy integrates management direction for the three provincial parks, as well as the Ranger North Conservation Reserve. In 1999, the Ministry of Natural Resources prepared a Statement of Conservation Interest to guide the management of the Ranger North Conservation Reserve. The policies and directives contained in that document have been incorporated within this strategy. MNR's Crown Land Use Policy Atlas has also been amended to reflect proposed management direction contained in this strategy and the respective Policy Reports for the protected areas of the signature site appear in Appendix C.

1.1 WHAT IS A SIGNATURE SITE?

Signature sites are distinctive geographic areas that showcase Ontario's natural heritage features. They were designated in 1999 as part of a land use planning exercise to complete the provincial parks and protected areas system within the Ontario's Living Legacy planning area (MNR, 1999). Algoma Headwaters is one of nine signature sites that were identified in this initiative.

Each site contains a mixture of features, land use designations and management approaches that collectively provide examples of Ontario's distinctive natural heritage. These sites have potential for enhanced resource protection and management, as well as enhanced tourism and recreational use.

The protected areas within signature sites are key to MNR's mandate to protect geological features and processes, as well as biodiversity and cultural and recreational features. Together, these areas will increase ecological representation and provide tourism opportunities as part of the provincial parks and protected areas system.





WHITMAN DAM FALLS

2.0 SUMMARY OF PLANNING TOPICS

MNR has identified a number of planning topics based on comments received in the earlier stages of planning for the Algoma Headwaters Signature Site. A brief summary of public consultation is provided for the following topics. Meetings and discussions with First Nations' communities took place during the planning process to obtain input regarding their values and concerns.

2.1 ACCESS / MECHANIZED TRAVEL

Due to the longstanding use of the network of roads and trails within the signature site, the management of access and mechanized travel is an important topic. Comments have been received regarding a wide variety of access topics,

particularly the continuing use of existing roads and trails. With regard to mechanized travel by snowmobiles and ATVs, a number of respondents commented that they would like all existing use patterns to continue. Private and commercial aircraft access and landing permits is another topic commented on, especially by tourist outfitters, as well as those who want to see the remoteness of the area protected. Access is addressed in detail in Section 8.1.

2.2 RECREATION

The area within the Algoma Headwaters Signature Site has been used for decades for backcountry recreation. There are some respondents who wish to see all current uses continue, while others would like to see some restrictions on uses, in order to protect the natural and cultural features of the site. Comments expressed the desire that there not be restrictions to either motor boat use or horsepower restrictions. There was interest in the development of hiking trails and hike-in and/or canoe-in campsites, as well as the improvement of canoe routes. Recreational uses are addressed in Sections 6, 7 and 8.

2.3 COMMERCIAL TOURISM

Significant interest was expressed regarding what constitutes an appropriate level of commercial tourism for the Algoma Headwaters Signature Site, in particular, whether or not there is capacity and desirability for expanded or additional levels of tourism. Some respondents expressed the view that limits should be set on further development to protect existing values; however, there were others who advocated additional tourism, provided the resource capacity could accommodate it. Section 7.2.5 provides direction on commercial tourism.

2.4 FISHERIES MANAGEMENT

There appears to be general agreement that existing fisheries regulations are sufficient to address fisheries management now. There was a mixed response from the public as to whether there should be some restrictions in the future such as fish sanctuaries, especially in winter. Some feel that winter fishing is exerting too much fishing pressure on lakes within the signature site, and should be discontinued. Others want to see this activity continued. Some expressed the view that the question of whether to permit additional stocking of lakes within the Algoma Headwaters Signature Site should be determined solely on a scientific basis. There was general support for further fisheries research. Fisheries concerns are addressed in Section 7.5.3.

2.5 HUNTING

Various comments were expressed about the continuation of hunting, with concerns ranging from the protection of wildlife, to the safety of canoeists, hikers and other recreational users. However, the most common opinion was that no change be made to current hunting policies, and that status quo be maintained. Some felt there should be enhanced hunting opportunities, including more moose tags available for the public and the current tourist outfitters. Hunting is addressed in Section 7.4.1.

2.6 WINTER USE

There were comments on existing winter use of lands and waters in the signature site, especially regarding snowmobile use. Some thought that restrictions should apply and that access to lakes should be restricted to snowshoeing, skiing and

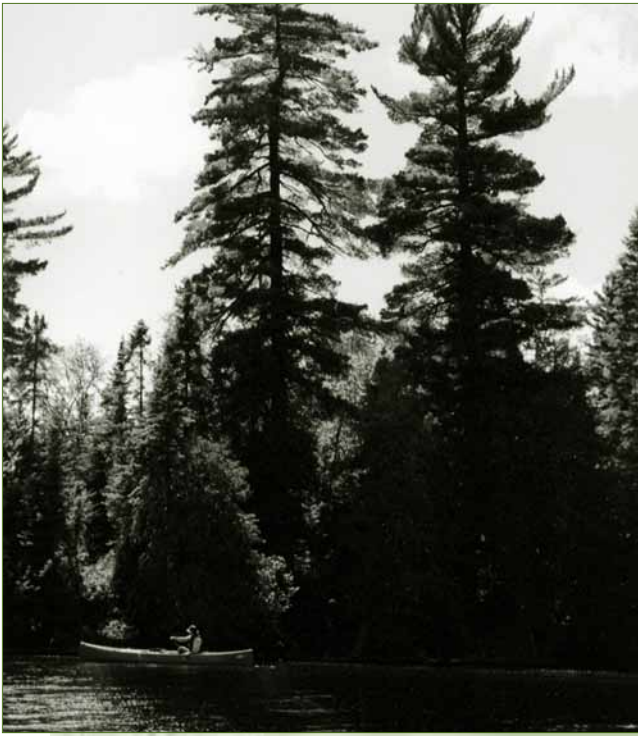
hiking. Questions were asked about the impact on the fishery as a result of increased winter use due to snowmobile access, and the view was often taken that ice fishing should not be allowed on most lakes within the signature site. Conversely, many respondents did not wish to see any restrictions, and thought that all areas should be accessible by snowmobile. (For winter uses, refer to Section 8.)

2.7 REHABILITATION OF SITES

A variety of responses were received regarding the management of existing waste disposal sites and aggregate pits within and around the signature site. There were comments about the possible closure of the Ragged Lake waste disposal site, and where garbage disposal would subsequently occur, while some felt that this type of land use had no place in a provincial park. Some felt that aggregate extraction should not occur within the signature site, while others support gravel extraction. Sections 7.2.6 and 8.1.1 address waste management and gravel extraction.

2.8 IMPLEMENTATION

Through public consultation, views were expressed regarding the implementation of policies and development proposals outlined during the development of the signature site strategy. While some wanted to see new facilities and improvements within the signature site, others wanted to see the signature site left “as is.” Some respondents were opposed to paying fees to visit the Algoma Headwaters Signature Site. Others felt that fees should be charged for entry, aircraft landing and license fees, and that this revenue should be used to cover park protection and development costs. Section 9.0 addresses implementation and development within the signature site.



CANOEING MEGISAN LAKE

3.0 PROTECTED AREA POLICY CONTEXT

The Ministry of Natural Resources (MNR) has established a number of protected areas throughout Ontario in the form of provincial parks and conservation reserves. The Algoma Headwaters Signature Site contains three provincial parks and the Ranger North Conservation Reserve. These areas collectively provide protection for natural, cultural and recreational features, as well as offer opportunities for outdoor recreation and tourism.

The authority and direction for the signature site planning process is based on legislation and policies that govern Ontario Parks and Crown land within the Province of Ontario. These include the following: Public Lands Act (RSO, 1990), Provincial Parks Act (1990), Ontario Provincial Parks Planning and Management Policies (MNR 1992), MNR Conservation Reserves Policy (PL 3.03.05), Ontario's Living Legacy Land Use Strategy (MNR,

1999) and additional policy clarification statements, as well as the Crown Land Use Policy Atlas (MNR, 2003).

3.1 A STRATEGY TO INTEGRATE PROTECTED AREAS

Resource management direction for Algoma Headwaters' three provincial parks and conservation reserve is integrated within this preliminary signature site strategy. Planning and management decisions will be made by Ontario Parks and the appropriate MNR district staff. Recognizing the intent to incorporate the forest reserves in the future, decisions regarding their management will be consistent with direction in Ontario's Living Legacy Land Use Strategy (MNR 1999) and Ontario's Crown Land Use Policy Atlas (MNR 2003).

This preliminary strategy provides proposed management direction for the protected areas which will be finalized after public consultation and the release of an approved strategy. An Interim Management Statement is in place to provide direction for the management of the three provincial parks within the Algoma Headwaters Signature Site, prior to the approval of the final strategy. A Statement of Conservation Interest (MNR 1999) provides direction to guide the protection and management of the Ranger North Conservation Reserve. That direction is incorporated into this preliminary strategy. Policy and permitted uses for each of the protected areas as outlined in this document is reflected in the Crown Land Use Policy Atlas (see Appendix C).

The planning process for the preparation of the Algoma Headwaters Signature Site Strategy is as follows:

- Interim Management Statement (released August 2001)

- Terms of Reference / Invitation to Participate (Public consultation complete: September 2002)
- Background Information (Public consultation complete: February 2003)
- Management Options (Public consultation complete: August 2003)
- Preliminary Strategy (Public consultation ongoing)
- Approved Strategy (Public inspection when complete)

Subsequent to the approval of the signature site strategy, implementation plans will be prepared by Ontario Parks and MNR staff, with additional public consultation to provide further guidance for the resource stewardship, operations and development of the signature site. This may include implementation plans such as for operations, access, recreation, species at risk, fisheries and forest fire management. The approved strategy, which will be prepared following consultation of this preliminary management strategy, will provide the management direction for the Algoma Headwaters Signature Site.

3.2 PROVINCIAL PARKS

Ontario's provincial parks are regulated by the Provincial Parks Act (1990) and are managed to ensure that their natural, cultural and recreational features and values are protected. Commercial timber harvesting, mining, and commercial hydro-electric power development are not permitted in provincial parks.

THE GOAL OF THE PROVINCIAL PARKS SYSTEM IS:

“To provide a variety of outdoor recreational opportunities and to protect provincially significant natural, cultural and recreational environments in a system of Provincial Parks.”

Provincial parks, including the three within Algoma Headwaters Signature Site, have four objectives: protection, heritage appreciation, recreation and tourism. The Ontario Parks Business Plan (2003/04) places greater emphasis on business operations within the parks program, and provides the following mandate:

“To protect, plan, develop and manage Ontario's system of provincial parks on an ecologically sustainable basis, while improving financial self-reliance.”

The Ontario Parks Business Plan (2003/04) also provides guidance in the form of operating principles. These are:

- Natural and Cultural Heritage Protection
- Customer Service
- Financial Self-sufficiency
- Accountability
- Entrepreneurial Environment

These operating principles will be incorporated into the implementation plans for the Algoma Headwaters Signature Site (see Section 9). Algoma Headwaters Provincial Park, Aubinadong-



Nushatogaini Rivers Provincial Park, and Goulais River Provincial Park comprise the provincial park components of Algoma Headwaters Signature Site. Management strategies for these parks appear in Sections 6 to 9.

3.3 CONSERVATION RESERVES

The Ranger North Conservation Reserve (7,020 hectares) was regulated in 1997 under the Public Lands Act (1990). Conservation reserves are established to complement provincial parks in protecting representative natural areas and special landscapes.

Development in conservation reserves is limited to backcountry campsites, portages, authorized trails, signs to identify trails and routes, minimal interpretive facilities and other simple facilities that support low-intensity recreational use. Detailed policies for conservation reserves are outlined in Conservation Reserves Policy and Procedures (MNR, 1997).

The features and values that are now included within the Ranger North Conservation Reserve were initially identified in the early 1990s in an inventory of old growth areas in Eco-region 4E (Iles, 1990). The area was withdrawn in 1996 from forest allocations, mining and mineral staking to ensure protection of its heritage features and values.

In 1999, Ontario's Living Legacy Land Use Strategy designated the Ranger North Conservation Reserve (along with the three new provincial parks) as an integral part of the Algoma Headwaters Signature Site. An important aspect of management is the continuing protection of the integrity of Ranger North's old growth forests, as well as maintaining the relative remoteness and limited access.

The management direction for this conservation reserve is detailed within the Ranger North Conservation Reserve Statement of Conservation Interest (MNR 1999b) and is incorporated into this strategy. The Crown Land Use Policy Atlas (MNR, 2003) also provides guidelines for land use activities (see Appendix C).

In accordance with Ranger North's Statement of Conservation Interest, most recreational activities that have traditionally been permitted may continue, provided they pose no threat to the natural ecosystems or features in the conservation reserve. Hunting (including bear hunting) and trapping will continue within the Ranger North Conservation Reserve. Mechanized travel, including snowmobiles and all terrain vehicles, and non-motorized travel, such as cycling and horseback riding, are permitted only on existing and authorized trails and roads. Management strategies for the conservation reserve appear in Sections 7 to 9. Note that zoning (as described in Section 6) does not apply to conservation reserves, but only to provincial parks.



MEGISAN LAKE

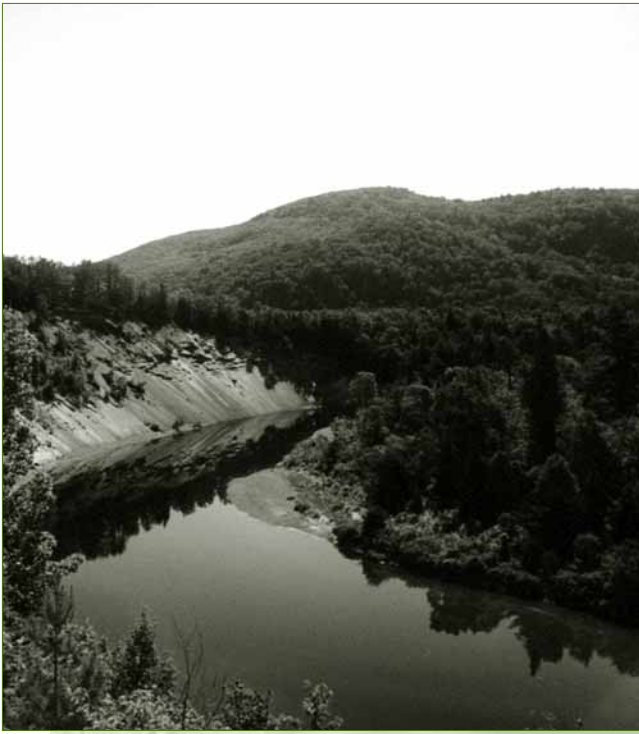
3.4 FOREST RESERVES

Forest reserves were designated under Ontario's Living Legacy Land Use Strategy (see Figure 2). The forest reserve designation is applied to areas that have been initially identified for inclusion in recommended provincial parks and conservation reserves, but where there are existing mining claims or leases. Protection of natural heritage and special landscapes is a priority within forest reserves, but some resource use can take place with appropriate conditions.

Forest reserves are mining lands that are protected under the Mining Act (1990). Therefore, mining, mineral exploration and related access will be permitted in a forest reserve. Commercial forest harvesting, new hydro-electric power development, and peat extraction will not be allowed, but most other resource and recreational uses may be permitted, provided they are consistent with the values that are being protected.

All or part of 11 mining leases and claims in Gapp Township that are adjacent to the boundary of the Algoma Headwaters Provincial Park have been designated as Algoma Headwaters Forest Reserve (F273), with a total area of 627 hectares. These include the extensive wetlands near Hanes Lake and south of Butter Tin Lake, which are locally and regionally significant. The intention is that these forest reserves will become part of the signature site in the future, when these active mining leases and claims are retired through normal processes (refer to Section 7.2.3).

The Crown Land Use Policy Atlas policy report for Algoma Headwaters Forest Reserve (MNR, 2003) also provides guidelines for land use activities (see Appendix C).



GOULAIS RIVER

4.0 PROTECTED AREA POLICY

The Algoma Headwaters Signature Site protected areas include provincial parks and a conservation reserve that have both similarities and differences in terms of policies.

The three provincial parks within the Algoma Headwaters Signature Site were regulated in 2003 under the Provincial Parks Act, and are governed by direction in the Ontario's Living Legacy Land Use Strategy (MNR, 1999) as well as by provincial park policies, procedures and bulletins.

The Ranger North Conservation Reserve was regulated under the Public Lands Act in 1997. A Statement of Conservation Interest (1999) provides management direction for the Ranger North Conservation Reserve.

The Ministry of Natural Resources and Ontario Parks are public agencies of the Crown and are subject to the Environmental Assessment Act. Management of protected areas within the Algoma Headwaters Signature Site will be carried out in accordance with legislation, policies and guidelines that are required under applicable Class Environmental Assessments and Declaration Orders (including *MNR 59/2* and *MNR 63*, and once approved, the MNR Class Environmental Assessment for Provincial Parks and Conservation Reserves).

All of these policies and documents establish the direction for planning and management of the protected areas within the signature site and are integrated into this preliminary strategy. The Crown Land Use Policy Atlas (MNR 2003) will be updated to reflect any policy changes that may result from the process to create an approved strategy.

4.1 PROVINCIAL PARK CLASSIFICATION

Ontario's system of provincial parks is composed of regulated provincial parks, each of which is assigned to one of six park classes. Park classification and the four objectives for provincial parks define the role of an individual park in terms of protection, recreation, heritage appreciation, and tourism. Each classification has its own function, characteristics and management framework, as well as distinctive planning, management and visitor policies. In addition to classification, zoning further determines permitted uses within parks (refer to Section 6.0).

Provincial parks are categorized into one of the following six classes: wilderness, nature reserve, historical, recreation, waterway, and natural environment.

Waterway and natural environment parks are found within the Algoma Headwaters Signature Site. The largest component of the signature site is Algoma Headwaters Provincial Park, which encompasses 42,745 hectares. It is classified as a natural environment park, owing to its character as a generally undeveloped backcountry landscape. Ontario Provincial Parks Planning and Management Policies (1992) describes natural environment parks as those which *“incorporate outstanding recreational landscapes with representative natural and historical features to provide high quality recreational and educational experiences.”* (MNR, 1992).

The Goulais River Provincial Park (5,084 ha) and the Aubinadong - Nushatogaini Rivers Provincial Park (4,928 ha) are both classified as waterway parks owing to the linear nature of their respective river and lake systems and corresponding park boundary. According to Ontario provincial park policy, waterway parks are those landscapes which *“incorporate outstanding recreational water routes, with representative natural features and historical resources to provide high quality recreational and educational experiences”* (MNR, 1992).

4.2 CONSERVATION RESERVE

Significant natural heritage areas of the signature site are within the Ranger North Conservation Reserve (7,020 hectares). Provincial policy and direction from the Ranger North Conservation Reserve Statement of Conservation Interest are applied in planning to protect and manage the natural heritage values of this area while allowing the many traditional public uses to continue (MNR, 1997).

4.3 GOAL AND OBJECTIVES

The goal for the Algoma Headwaters Signature Site is:

To protect provincially significant natural and cultural landscapes, while providing a variety of outdoor recreation activities, as well as enhanced related tourism opportunities.

4.3.1 ALGOMA HEADWATERS SIGNATURE SITE OBJECTIVES

Objectives have been established for Algoma Headwaters Signature Site by drawing on broad provincial park and conservation reserve objectives.

These objectives are:

PROTECTION: To protect provincially significant and representative upland vegetation communities including red and white pine and sugar maple and black spruce dominated forests with intermixed wetlands and aquatic systems in river and lake environments. This landscape also protects representative cultural heritage and recreational features and values.

HERITAGE APPRECIATION: To provide opportunities for exploration and appreciation of the natural and cultural outdoor heritage of the Algoma Headwaters landscape.

RECREATION: To provide outdoor recreation opportunities ranging from day-use visits to backcountry experiences associated with upland, river and lakeland features of the Algoma Headwaters landscape.

TOURISM: To provide Ontario's residents and visitors with opportunities to discover and experience the distinctive features and values of the Algoma Headwaters landscape.

FINANCIAL SELF-RELIANCE: To protect, plan, develop and manage the provincial parks of the Algoma Headwaters Signature Site on an ecologically sustainable basis, while improving financial self-reliance.

4.3.2 SPECIES AT RISK

MNR provides enhanced protection to vulnerable (special concern), threatened and endangered species through legislation and policies, and the development of recovery strategies. The species-at-risk program coordinates conservation, protection, and recovery actions with a variety of partners, increases public awareness, and works to prevent further decline of affected species and their habitats.



One species at risk of particular significance is found in the Algoma Headwaters Signature Site. It is currently designated 'special concern' by the MNR and is proposed for endangered species status. It is not named in this strategy to minimize threats which may arise if the species or its location were disclosed.

Recovery plans identify ways to manage and improve the status of this species and their habitat and to take action to mitigate further decline. These include stewardship activities, habitat protection and restoration, monitoring, research and public information. Such actions may be applied here in terms of pursuing a variety of conservation, protection and recovery efforts.

A provincial recovery team has been established to address the preservation of the sensitive species at risk found in the Algoma Headwaters Signature Site. Partnerships have been formed with the academic community to carry out research on this species within the signature site. A Species at Risk Strategy will be prepared for the signature site and may also be incorporated into the Forest Management Plan for adjacent Crown lands. Public education programs may be developed to educate signature site visitors about measures for protection, and to ensure their sustainability into the future.

Zoning of lands within the signature site will be used to protect habitat for species at risk.

GOULAIS RIVER



PURPLE-FRINGED ORCHID (*Platanthera grandiflora*)

5.0 PROTECTED AREAS BOUNDARY AND LAND USE

The boundary of Algoma Headwaters Signature Site is elongated and irregular, with two linear waterway parks extending to the south. The signature site is approximately 60,000 hectares in total area, and is comprised of four protected areas (as described earlier and shown in Figure 2).

Private land is not included in the protected areas, nor is the use of private land governed by the policies in this preliminary strategy. The protected areas are surrounded by Crown land, with few geographic features delineating its boundary. An exception is along the west and south-west boundary of Algoma Headwaters Provincial Park, which is delineated by the Ranger North West Road.

Several mining leases and claims are located adjacent to the western sector of Algoma Headwaters Provincial Park, in the vicinity of Hanes and Butter Tin Lakes. These lands are designated as forest reserves and when they are eventually retired through natural processes, the intent is that they will be included within the park boundary. This would include the extensive wetlands near Hanes Lake and south of Butter Tin Lake, which are locally and regionally significant.

There is minimal development within the Algoma Headwaters Signature Site, and Ontario Parks has not yet developed any facilities within these parks. However, within these protected areas there are many locations with informal parking, tent sites and fire pits that have been in use for several decades. There are no existing facilities and little use in the Ranger North Conservation Reserve, primarily due to limited access.

Existing activities and development adjacent to the signature site on Crown land include roads, timber harvesting, trapping, remote commercial tourism and public recreation. Existing recreational and tourism opportunities within the signature site include fishing, hunting, camping, canoeing, wildlife viewing and snowmobiling.

There are many existing roads, trails and camping areas within the signature site, most of which have been in use for several decades. Access to the Algoma Headwaters Signature Site is by:

ROAD ACCESS:

- from the west/south: Access is from the communities of Sault Ste. Marie and Searchmont by way of the Whitman Dam Road and subsequently the Laughing Lake Road, to the Ranger North Road.
- from the east/south: Access is from the town of Thessalon, north on Highway 129 to the Ranger Lake Road and north onto the Ranger North Road East (northeast side).

AIR ACCESS:

- Most major water bodies in the protected areas are currently accessible by private and commercial aircraft. While air access enables private sport fishing and other recreational uses, most existing air traffic is from commercial tourist operations.

WATER ACCESS:

- Motorboat use is common in the protected areas, on lakes accessed by road, aircraft, or where commercial tourist facilities are located. Canoeists travel on major water bodies, as well as some of the less accessible waterways within the signature site.

There are two emergency evacuation sites that will remain within Algoma Headwaters Provincial Park and Goulais River Provincial Park. These sites were strategically located by the forest industry prior to the establishment of the parks, and are situated at Fyfe Lake, and at the intersection of the Whitman Dam Road and the Domtar Road (see Figure 3). They are situated in road-accessible locations for the safety of forest workers and the public, for use in helicopter evacuations, forest fires and other emergencies.

The signature site contains a number of land use permits and patented (private) properties that are used for either commercial tourism or private recreation purposes. There are 13 private recreation camps (seven of which are on Saymo Lake) that are situated within or adjacent to the protected areas, which are for personal (non-commercial) use only. These are located in Reilly, McIlveen, Gaudry, Carruthers and Handleman townships. In the Ranger North Conservation Reserve, there is one patented property on Quinn Lake. Another private property is located in Daumont Township and is surrounded by Goulais River Provincial Park. All patented properties are excluded from the protected areas, and are not subject to this strategy.

Fly-in tourism establishments, including lodges on

Megisan Lake, Goulais Lake and Patter(son) Lake are on lakes surrounded by the provincial parks. In addition, there are outpost camps on the following waters: Gord Lake, Prairie Grass Lake, Affleck Lake, Nushatogaini Lake and Nushatogaini River.

Portions of 15 registered trap lines, as well as three trap cabins, are situated in the protected areas within Hynes, Ewen and Hoffman townships (see Figure 4). Portions of eight bear management areas are also located within the protected areas, some of which are not active (see Figure 5).

During the 1990s, “mini” land use permits were issued to remote tourist outfitters for tent platforms (used for hunting purposes only) on some interior lakes. These permits are no longer active, and will not be re-established.

Eleven mining leases and claims (or portions thereof) that collectively comprise 627 hectares, are found in the western reaches of Algoma Headwaters Provincial Park. These mining lands are situated in Gapp Township and have been designated as forest reserves. These areas include wetlands in Hanes Lake and south of Butter Tin Lake that have been designated as regionally and locally significant. The intent is to add these to the signature site when they lapse and revert to the Crown.

Two patented mining claims are in Lunkie Township, both of which abut the boundary of Goulais River Provincial Park. The two patented mining claims are not currently designated as forest reserves, but if they lapse and revert to the Crown the intent would be to also add them to the signature site.

There are two waste disposal sites within the vicinity of the signature site. One waste disposal site is situated outside, but adjacent to, the protected area boundaries, west of Gong Lake in McIlveen Township. The second site, the Ragged Lake waste disposal site, is situated in Gaudry Township, inside the signature site. This waste disposal site will be closed and rehabilitated.

A hydro-electric utility corridor with high-tension transmission lines bisects the Algoma Headwaters Signature Site, and is included within the regulated respective park boundaries. These traverses occur in two locations: on Gong Creek, just northeast of Gong Lake (for a distance of approximately 450 metres within Aubinadong-Nushatogaini Rivers Provincial Park) and on the Ranger North West Road, between Hound and Fyfe Lakes (for a distance of approximately two kilometres within Algoma Headwaters Provincial Park.). The hydro transmission corridor is held under a long-term land use permit, which is re-issued every five years under a 'Provincial Memorandum of Agreement' between MNR and Ontario Hydro Services.

MNR has responsibility for two dams within the Algoma Headwaters Signature Site. These are the Dyson Lake dam, which is at the southeast corner of the lake, and the Saymo Lake dam, which lies at the terminus of the Aubinadong-Nushatogaini Rivers Provincial Park, at the south end of Saymo Lake where it drains into Ranger Lake. These dams date back to the 1930s, and are somewhat dilapidated. The Dyson Lake dam is no longer

functional and holds back little water. It poses little potential risk in the event of failure, and will not be replaced.

The Saymo Lake dam, although functional, is in poor condition, and has deteriorated to the point where water level control is ineffective. In 2001-02, a dam safety assessment report, an environmental assessment (Class EA - project plan,) and an emergency preparedness plan were prepared for MNR. Recommendations were made in the assessment report for this existing structure on Saymo Lake to be replaced by an "overtoppable" rock weir, which would require no manual operation and very limited maintenance. It would also provide an opportunity for fish migration between Ranger Lake and Saymo Lake. The replacement of this dam will depend on provincial priorities and funding availability.



GORD LAKE OUTPOST CAMP



MOOSE (*Alces alces*)

6.0 PARK ZONING

Zoning will only apply to the provincial parks within the signature site. Zoning allocates park lands and waters to their most appropriate use, based on their protection requirements and potential for recreation. The concept of zoning during planning recognizes that each provincial park possesses a unique combination of resources, features and potential experiences. Provincial parks are zoned according to Ontario Provincial Park Planning and Management Policies (1992) and with adherence to the Provincial Parks Act.

Zoning will not be applied to the Ranger North Conservation Reserve. Conservation reserves are not subject to provincial park policies and are governed under the Public Lands Act, which does not provide for specific zoning as it is applied to provincial parks. Enhanced protection of features

and values within the reserve will therefore be achieved through other avenues, primarily by means of existing legislation and policy for conservation reserves. In situations or locations where existing or new land uses may conflict with the protection of significant values, a “test of compatibility” will be applied (MNR 1997).

6.1 ZONING POLICIES

Zoning, as part of planning for provincial parks, allows for certain distinct portions of the site to be managed differently from other areas. This is based on the reality that visitors do not use all resources in the same way and that all activities are not carried out everywhere, nor should they be. For example, an area with rare or sensitive vegetation may be zoned as a nature reserve, a designation which restricts use to very low-impact activities, thus affording that site the highest level of protection.

There are six types of zones that can be delineated in the planning of provincial parks. These are:

- natural environment
- wilderness
- nature reserve
- access
- development
- historical

When new information becomes available through future inventories or planning, or if there are significant demonstrated conflicts as a result of specific land uses, then enhanced protection of heritage values may be considered. This may be carried out through a change in zoning or other amendment, after the Algoma Headwaters Signature Site Strategy is approved. Zoning for provincial parks within the Algoma Headwaters Signature Site is described below (see Figure 6).

6.1.1 NATURAL ENVIRONMENT ZONES

Natural environment (NE) zones include natural, cultural and aesthetic surroundings in which a minimum of development is required to support low-intensity recreational activities. Development in natural environment zones is limited to backcountry campsites, portages, trails, signs necessary to identify routes, minimal interpretive facilities, and other simple facilities that support low-intensity recreational use. Existing authorized roads will continue as per direction in the Land Use Strategy (MNR 1999). Subsequent agreements provide direction on the continuance of authorized roads (refer to Section 8.1.1).

Hunting (including bear hunting) and trapping will continue in natural environment zones within the provincial parks. Use of motorboats is also permitted in natural environment zones. Vehicle travel on existing authorized roads will also be permitted to continue in this zone. Use of ATVs will not be permitted within natural environment zones, unless an authorized trail is designated by the park superintendent. The only “authorized” trail network for ATVs within the signature site is the portion of the Point Lake Road within Algoma Headwaters Provincial Park and the Saddle Lake Road within Goulais River Provincial Park.

The majority of the area of the three provincial parks will be designated as natural environment zones. The Ranger North Conservation Reserve will not be zoned. Based on geographic and management similarities, it is recommended that three natural environment zones will be designated within provincial parks (see Figure 6). These proposed zones are:

NE-1: ALGOMA HEADWATERS – (34,100 ha) – This is a somewhat remote area with minimal road access, and would encompass over half of the area in the provincial parks. This zone includes the largest

number of backcountry campsites in the signature site. As such, management would consist of minimal facilities such as necessary signs, portages, campsites with designated fire pits and backcountry privies. However, to enhance backcountry use, the establishment of small, all-season, roofed accommodations such as yurts may be considered. These could provide opportunities for canoe-in use, hut-to-hut hiking, and cross-country ski touring.

NE-2: GOULAIS RIVER – (4,160 ha) – This zone will cover most of Goulais River Provincial Park. Existing sections of the Whitman Dam Road (totalling 14.5 km), which was developed prior to the park establishment, are included within this zone. Use of this road may continue as a non-conforming use within the natural environment zone. Ontario Parks will work with the forest industry, the prime user of the Whitman Dam Road, to relocate 14.5 kilometres of this road outside the park over time. (Refer to Section 6.1.3: NR-1 South Goulais River Nature Reserve Zone). Portages and dispersed backcountry camping will continue in this zone, with accompanying signage.

NE-3: AUBINADONG-NUSHATOGAINI RIVERS – (4,930 ha) – This zone would cover almost the entire waterway park, which has minimal road access. Portages and dispersed backcountry camping will continue in this zone, with accompanying signage. The Gong Lake Access Zone and the Friendly Lake Development Zone are surrounded by this natural environment zone.

Hike-in and/or canoe-in campsites, as well as a new hiking trail, will be considered in the vicinity of Moon Lake, Simms Lake, Eileen and Coppens Lakes, and at the site of the rock barrens off the Domtar Road.

6.1.2 WILDERNESS ZONE

Provincial parks can be managed to enhance wilderness experiences through the designation of wilderness (W) zones. These zones designate park lands and waters that are sufficiently large and thus have integrity to protect significant natural and cultural features, and are suitable for wilderness experiences, with an absolute minimum of development.

A significant feature of Algoma Headwaters Provincial Park is its potential to provide a wilderness setting and quality visitor experiences, based on the area's remoteness. To many backcountry travelers, wilderness settings mean a place contains pristine lands and waters, unmarred by roads, development or human disturbance, where natural processes are allowed to function freely, and where travel is by non-mechanized means (MNR, 1992).

Given that the northeast sector of Algoma Headwaters Provincial Park is a remote and roadless area containing significant natural heritage and recreational values, the establishment of a wilderness zone is deemed an appropriate designation to protect park values and to further the goal and objectives of the site. Thus, the following wilderness zone will be designated:

W-1: NOKOMIS-FIRETRAIL

LAKES – (8,600 ha) – This zone encompasses the northeast corner of Algoma Headwaters Provincial Park, and includes the western portion of Beckett Township and much of Patenaude Township. The southern boundary of this wilderness zone would follow the northern boundary of the Carton-Carruthers Township line, except at the west end where it would dip southward to capture the Gord Lake old growth white pine stands. The white pine forests located just west of Gord Lake are among the oldest and best examples of representative old growth white pine in the Algoma region of Ontario.

This zone would protect a large portion of the most remote area of Algoma Headwaters Provincial Park. The area's wilderness characteristics and remote quality will be sustained through management.

The existing commercial tourism facilities and private camps will remain throughout the signature site (see Section 5.0 and Figure 3 – Existing Development).

New development in a wilderness zone is limited to rustic campsites, portages, trails and signs necessary for trails and route identification. While hunting will continue, mechanized travel associated with hunting are not permitted within this wilderness zone.

Activities within wilderness zones have certain restrictions. There is no mechanized travel permitted in the wilderness zone, including but not limited to ATVs, motorboats, and snowmobiles, except for authorized use by registered trappers, bear management operators and landowners.

Aircraft landings are not permitted in the wilderness zone, other than what has occurred in the past for access to existing private holdings. Along with nature reserve zones, the wilderness zone is the only other area within the signature site where aircraft landings are not permitted.

Campsites are permitted in wilderness zones, but would consist of minimal facilities, such as necessary signs, designated fire pits, and backcountry privies. However, to enhance backcountry use, Ontario Parks may establish small, all-season, roofed accommodations such as yurts in this zone. These could provide opportunities for canoe-in use, hut-to-hut hiking, and cross-country ski touring.



REMOTE BACKCOUNTRY

6.1.3 NATURE RESERVE ZONE

Nature reserve (NR) zones include significant earth and life science features that require a special type of management from those in adjacent zones, with an absolute minimum of development. Some areas within the site are important habitat for significant or uncommon plants and animals, which occur at the northern limits of their range, or are a species at risk.

Development within nature reserve zones is limited to day use and non-mechanized trails, necessary signs related to natural heritage education, backcountry travel, and temporary facilities for research and management (MNR 1992). No hunting is permitted in nature reserve zones.

The Butter Tin Bog is located within the forest reserve in Gapp Township. This bog has significant life science values, particularly because of the uncommon plants that are found there. Should the mining lands within the forest reserve be retired through natural processes, these lands would revert to the Crown and this bog would be added to Algoma Headwaters Provincial Park. At that time,

additional planning would evaluate values information and may propose an amendment to current planning documents to designate the bog as part of a nature reserve zone.

The southern portion of Goulais River Provincial Park has extremely significant natural heritage values as it contains species at risk. Given the significance, sensitivity and vulnerability of these species, it is recommended that the following area be designated a nature reserve zone:

NR-1: SOUTH GOULAIS RIVER – (925 ha) – This zone consists of the most southern 12 kilometres of Goulais River Provincial Park. It includes that portion of the area around Whitman Dam Falls, as well as part of the walking trail, that is not included within the access zone (A-4).

The Whitman Dam Road, in its entirety, is outside of this zone but would form the western boundary of the nature reserve zone. The road is designated as a non-conforming use of part of the adjoining natural environment zone (see NE-2 Goulais River).

Special management prescriptions apply within a nature reserve zone, and motorized travel, hunting and camping are not permitted.

It is recommended that the unmanaged East Goulais River Road be closed and rehabilitated. There would be no allowance for fording the river here with vehicles, such as ATVs, cars or trucks. In addition, there would be no camping permitted at the river campsites that were previously unmanaged in this location.

To protect park values, it is recommended that future realignment of the Whitman Dam Road includes moving those sections of the road that lie within the park to locations outside the park boundary.

6.1.4 ACCESS ZONES

Access (A) zones serve as staging areas where minimum support facilities enable controlled entry to and use of the site. The infrastructure and use in access zones is limited to: roads, visitor control structures, basic day-use facilities, small car campgrounds, basic commercial services including outfitting for backcountry users, and orientation, interpretive, education, research and management facilities. For public safety, hunting is not permitted in access zones in Algoma Headwaters Signature Site.

There are numerous existing, unmanaged access points and landings within the protected areas. However, some of these currently used locations may be unsafe, are not of adequate size, or are in poor condition and, as such, do not meet park management standards. A review of existing and potential access points and landings has been undertaken, with an assessment of use, site characteristics, safety, and potential for improvements relative to minimum park operating standards.

Based on this assessment, it is recommended that the following access zones be designated:

- A – 1: QUINN LAKE – (6 ha)** – This zone is within Algoma Headwaters Provincial Park and provides access into Ranger North Conservation Reserve, to the east of Quinn Lake. This is a scenic canoeing lake. It may be feasible to accommodate campsites on the former MNR airstrip adjacent to the lake.
- A – 2: HOUND LAKE – (2 ha)** – This site has excellent access and opportunities for day use.
- A – 3: GONG LAKE – (2 ha)** – This zone contains two small access and camping areas that are located at the west end of Gong Lake. The zone would enable access to and camping on Gong Lake, as well as provide access to the Aubinadong - Nushatogaini Rivers canoe route.
- A – 4: WHITMAN DAM FALLS – (8 ha)** – This site provides access to the west shore of the spectacular Whitman Dam Falls, and receives day-use on the trail for the viewing of these scenic falls. This trail extends beyond



GOULAIS RIVER

the access zone into the nature reserve. The existing very small parking area and trail would be managed by Ontario Parks, and has excellent potential for interpretive trails. Camping would not be permitted within the Whitman Dam Falls access zone.

A - 5: TORRANCE LAKE - (2 ha) - The 6.3 km Torrance Lake Road is not maintained, but affords rugged access to Torrance Lake and the Aubinadong - Nushatogaini Rivers Provincial Park. The landing at the south end of Torrance Lake has little potential for camping.

6.1.5 DEVELOPMENT ZONES

Development zones provide facilities and services for a wide range of day-use and camping activities. This type of zone will comprise a very small area within provincial parks, and would accommodate car camping and use in an established area that may offer a moderate level of service and facilities.

Development zones may contain facilities such as: visitor control structures, day-use infrastructure, car campgrounds, administrative offices and basic commercial services; as well as orientation, interpretive, educational, research and management activities. In general, development zones receive more extensive use and allow for more site infrastructure than access zones. No hunting is permitted in development zones.

The following are recommended as development zones:

D - 1: RAGGED LAKE - (25 ha) - This is the site of an existing access point and a former MNR work camp (now closed and the site rehabilitated.) This area could accommodate an Ontario Parks visitor control station and administrative work centre, as well as a small car campground (up to 50 campsites) or other associated recreation facilities.

D - 2: FRIENDLY LAKE - (8 ha) - Informal road accessible camping is in place at Friendly Lake and could potentially provide up to 20 vehicle-based campsites.

6.1.6 HISTORICAL ZONES

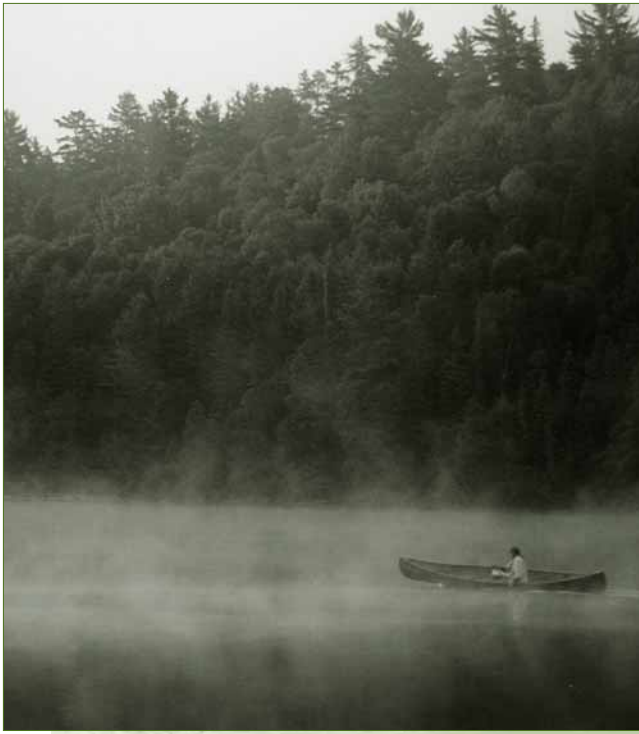
Historical (H) zones include any significant historical resources requiring management different from that in adjacent zones. A minimum of development allows for visitor exploration and appreciation, as well as scientific research. Significant archaeological and historical resources that require special protection and management may be designated as historical zones. The priority for historical zones is protection, cultural heritage appreciation and research.

In historic zones, permitted uses are limited to those activities associated with visitor exploration and scientific research. Development in historical zones is limited to minimal interpretive, educational, research and management facilities, as well as trails, portages and necessary signs. No development is proposed for the historical zones within the signature site.

Within Algoma Headwaters Provincial Park, it is recommended that the following two locations be designated as historical zones:

H-1: NORTH ISLAND IN MEGISAN LAKE - (3 ha) - Archaeological interpretation suggests that this was the site of an encampment. Aboriginal peoples congregated here in summer before dispersing and moving inland for winter to hunt and trap.

H-2: NORTHEAST SHORE OF MEGISAN LAKE - (5 ha) - Archaeological evidence at this site suggests that Aboriginal peoples used this location for building canoes and other traditional items.



RAGGED LAKE

7.0 RESOURCE STEWARDSHIP POLICIES

Algoma Headwaters Signature Site will be managed in accordance with Ontario's policies and legislation for provincial parks and conservation reserves. The following policies and legislation provide the foundation for resource stewardship within the signature site:

- Ontario Provincial Parks Planning and Management Policies (MNR 1992) and park policies, procedures and guidelines
- Ontario's Living Legacy Land Use Strategy (MNR 1999) and subsequent OLL policy clarification statements for provincial parks and conservation reserves
- The Crown Land Use Policy Atlas (MNR 2003)
- Sault Ste. Marie, Chapleau & Blind River District Land Use Guidelines (MNR 1983)
- Conservation Reserve Policy (PL 3.03.05, MNR 1997)

- The Provincial Parks Act (RSO,1990)
- The Public Lands Act (RSO,1990)
- The Environmental Assessment Act (RSO,1990)
- The Environmental Bill of Rights (1994)

Public consultation has also been important in determining what should be considered in resource stewardship. The general public, adjacent landowners, First Nations, Crown land users and others were encouraged to identify their interests during earlier stages of this planning process, and their input has been carefully considered.

The following outlines the resource stewardship policies for the Algoma Headwaters Signature Site, which will serve to ensure that the overall objectives for the site are achieved.

7.1 ABORIGINAL AND TREATY RIGHTS

The Algoma Headwaters Signature Site contains traditional Aboriginal travel routes and areas for hunting, trapping and fishing, as well as gathering and habitation. The use of traditional resources by Aboriginal people with treaty and constitutional rights for subsistence and ceremonial purposes will continue within the signature site, with consideration for public safety and conservation objectives.

7.2 LAND MANAGEMENT

The management of the signature site's Crown land base will be directed towards maintaining the natural landscape and protecting the ecological diversity and integrity of the site. Contingent upon funding, the terrestrial ecosystems and bio-diversity of the signature site will continue to be documented through inventories, assessments and research.

Commercial timber harvesting, mining or mineral exploration, or commercial electrical power generation development (such as hydroelectric and wind power) is not permitted within the Algoma Headwaters Signature Site. In addition, new energy transmission and communications corridors will be discouraged within the signature site boundary. Any new proposals will need to be evaluated through an amendment to the strategy.

Several existing trails branch off from the existing hydro utility corridor into the signature site. Motorized use of these trails to access the signature site is not permitted and they will be closed.

The two emergency evacuation sites located at Fyfe Lake, and at the intersection of the Whitman Dam Road and the Domtar Road (see Figure 3) will remain within Algoma Headwaters Provincial Park and Goulais River Provincial Park. These sites are situated in road-accessible locations for the safety of forest workers and the public, and for use in helicopter evacuations, forest fires and other emergencies. These emergency evacuation sites must be kept clear, and are not intended for any other use. They are managed by the forest industry under the direction of the Ministry of Natural Resources. A letter of authority will be issued for the long-term management of these sites.

7.2.1 ADJACENT LAND USE

Management decisions related to lands adjacent to the Algoma Headwaters Signature Site are based on existing legislation, and strategic direction and policy, such as, but not limited to the following: the Public Lands Act, Ontario's Living Legacy Land Use Strategy, the Crown Forest Sustainability Act, the Forest Accord, Crown Land Use Policy Atlas, Environmental Assessment Act and forest management plans.

The Ministry of Natural Resources considers management needs of signature site-related values

on adjacent lands and waters within the context of the greater ecosystems of the site's protected areas. In this way, planning that is identified to be implemented in the approved strategy will potentially include the preparation of a vegetation and fire management strategy, species at risk management strategy, resource road access strategy and a recreation use strategy.

The designated tourism lakes adjacent to Algoma Headwaters Signature Site (along with potential amendments to the Crown Land Use Policy Atlas Policy Reports for Algoma Headwaters Provincial Park, Goulais River Provincial Park and Aubinadong-Nushatogaini Rivers Provincial Park) will be considered during forest management and land use planning. This will ensure the protection of values that may be affected outside the protected area boundaries (see Section 5.1, and Appendix C).

7.2.2 FOREST OPERATIONS

Forest harvesting and renewal activities are not permitted within protected areas. No new forest access roads will be constructed within the signature site (MNR 1999). The use and maintenance of existing authorized forest access roads within the signature site will continue, as outlined within the Roads Agreement between Clergue Forest Management Inc. and/or North Shore Forest Management Inc., and Ontario Parks (MNR, 2003). Refer to Appendix B.

Realignment of existing forest access roads is permitted in keeping with standards for safe use of roads or to enhance park values (MNR 1999.) Over time, Ontario Parks will work with the forest industry (the prime user of the Whitman Dam Road) to relocate 14.5 kilometres of this road to outside the park boundary (see Section 6.1.1: NE-2 Goulais River Natural Environment Zone).

Forest operations adjacent to the site will continue to be managed by the Sault Ste. Marie and Chapleau

MNR districts and the respective sustainable forest license holders. Forest management planning, especially annual work schedules, will be reviewed to identify signature site-related values and the necessary forest management practices required to sustain the ecological integrity of protected areas.

7.2.3 MINING AND MINERAL EXPLORATION

Mineral exploration and mining are not permitted within protected areas. However, policy allows the mining industry to access existing mining lands contained within a new park, with appropriate consideration for the protection for park values.

The Algoma Headwaters Forest Reserve (F273) has existing mining tenure, and therefore, mineral exploration, mining and related access are permitted to continue. In the event that lands currently within the forest reserve revert to the Crown through normal processes, these areas will be added to Algoma Headwaters Provincial Park (MNR 1999, MNR 2003).

There are two patented mining claims in Lunkie Township, both of which abut the boundary of Goulais River Provincial Park. These mining claims are private land, and although they have not been designated as forest reserves, if and when they lapse and revert to the Crown through normal processes, the intent would be to add them to Algoma Headwaters Signature Site. This would require an amendment to the direction in the Crown Land Use Policy Atlas.

A portage on the Goulais River crosses both properties and its use will require an agreement with the property owner.

7.2.4 LAND DISPOSITION

No new sale or dispositions of lands for the private use of individuals or corporations will be permitted within the Algoma Headwaters Signature Site. Patented lands may be transferred or sold. However, if any landowner or existing land use permit holder wishes to sell, the MNR may consider purchase of the land and/or improvements on a willing seller/willing buyer basis.

Should a land use permit for a private recreation camp revert to the Crown, it will no longer be available. If there is a request for a transfer of a private recreation camp on a land use permit, this will be determined on a case-by-case basis.

To protect the remoteness and natural heritage values, and because of the number of facilities already situated here, it is recommended that no Crown land be granted for the establishment of new commercial tourism facilities within the signature site (see Sections 5.0, 7.2.5 and Figure 3).

7.2.5 COMMERCIAL TOURISM

Existing commercial tourism facilities may continue within the signature site. Existing authorized land use permits may continue to be renewed for commercial tourism purposes, given that the terms, conditions and intent of the permit are being met. Commercial tourism establishments that have tenure by land use permit may be eligible for enhanced tenure, but not for the sale of the land on which they are situated. Transfer of existing commercial tourism facilities would be permitted.

There are currently some vehicular access and travel restrictions to some lakes with commercial facilities for the protection of tourism values (for example, Goulais and Patter Lakes). Should those facilities on patented land cease to be operated as commercial ventures, then the MNR may re-evaluate the intent of those access restrictions.

There are a number of features and values that are key attributes of the signature site that were reviewed as significant in this assessment of whether additional tourism development is warranted at this time:

FEATURES (natural, cultural and recreational):

- self sustaining fisheries with native species diversity and populations
- sensitive biological features including species at risk and old growth forests
- existing commercial tourism development and previous planning direction to sustain these operations
- existing canoe routes
- existing limited development

VALUES:

- existing limited access
- remoteness (in terms of access within the region and province)
- quality visitor experiences
- aesthetics and low levels of development and use (as wilderness values)

After consideration of the above features and values, especially remoteness and natural heritage values, it is recommended that commercial tourism facilities be maintained at existing levels. It is also proposed that no additional development or expansion be considered within the Algoma Headwaters Signature Site at this time. This would protect the natural and cultural features and values associated with the signature site, and would ensure that only low-intensity, minimal-impact activities would continue.

7.2.6 WASTE MANAGEMENT

The Ragged Lake waste disposal site is located within Algoma Headwaters Provincial Park. It will be permanently closed and rehabilitated, in accordance with the requirements of the Environmental Assessment Act (RSO, 1990).

A conservation philosophy of recycling and “pack-in/pack-out” will be promoted to park visitors.

7.3 VEGETATION MANAGEMENT

Management of vegetation within the Algoma Headwaters Signature Site will be directed towards supporting the natural succession of vegetation communities. Commercial timber harvesting is prohibited within the signature site, including the Ranger North Conservation Reserve. The harvesting of non-timber forest products (i.e. Canada yew, ground hemlock, etc.) is not permitted within the signature site.

The Algoma Headwaters Signature Site will be maintained in as natural a state as possible. Insect and disease control measures may be considered, if the identified values are threatened. Infestations of forest insects and diseases may be monitored and assessed. The use of potential control measures would be outlined in the vegetation stewardship plan for the signature site. Biological controls will be used wherever possible.

The removal of hazardous trees will be permitted in all zones, where safety is a concern (e.g. authorized trails, access points). Areas that require rehabilitation (e.g. abandoned roads) may be restored using plant species native to the park.

Herbicide applications are discouraged for vegetation management. Brushing and ditching along authorized existing roads may be permitted to improve sight lines and/or traffic flow, dependent on park values. Ontario Parks / MNR District staff will have discussions with Ontario Hydro Services and the Sustainable Forest License (SFL) holder regarding management requirements for the control of underbrush and other vegetation along the hydro corridor and roadways, to ensure the protection of the signature site’s values. A vegetation plan will be prepared for the Algoma Headwaters Signature Site.

7.3.1 FUELWOOD HARVESTING

Fuelwood cutting is not permitted within the provincial parks or within the Algoma Headwaters Signature Site. However, MNR may make an exception to issue a fuelwood permit to landowners within the Ranger North Conservation Reserve who do not have road access, if it is determined that there is a suitable location where cutting would have minimal impact on the site's values.

7.3.2 FIRE MANAGEMENT

The Ministry of Natural Resources recognizes fire as an essential ecosystem process fundamental to maintaining and restoring the ecological integrity of protected areas in the Great Lakes – St. Lawrence and Boreal Forest Regions.

Fire management planning will be undertaken by Ontario Parks in cooperation with MNR's fire program, to determine approaches to fire management. A fire management plan identifies management objectives, protection priorities, the potential use of prescribed fire and/or prescribed burning, and fire response activities. Fire management planning will advance the use of fire to meet ecosystem management objectives, while ensuring appropriate response to forest fires to prevent personal injury, value loss, and social disruption. This plan will examine the historical role of fire in the eco-district, and its potential beneficial effects, particularly with regard to forest succession and the rejuvenation of white pine.

In the absence of an approved fire management plan, fire will be managed as on adjacent lands, as directed by the Forest Fire Management Strategy for Ontario within the Great Lakes - St. Lawrence fire management zone.

Fires that threaten park visitor safety or park infrastructure will receive full response and

sustained action until extinguished. Other fires can be considered for modified response, through consultation between the Park Superintendent and the Fire Management Supervisor / Duty Officer.

Wherever feasible, "*light on the land*" fire suppression techniques, which do not unduly disturb the landscape, will be used when protecting sensitive features. Examples of "*light on the land*" techniques may include limiting the use of heavy equipment and foam retardant, as well as limiting the number of trees felled during fire response efforts.

Prescribed burning may be used and will be subject to Ministry of Natural Resources policies and guidelines in order to achieve ecosystem management or hazard reduction objectives.

The Statement of Conservation Interest (1999) for the Ranger North Conservation Reserve provides direction for the management of fire within the reserve. It states that forest fire protection will be carried out within the Ranger North Conservation Reserve as on surrounding Crown land, unless alternative direction for the control of fire or the use of fire for management purposes is approved. (Should this occur, a major amendment to the Ranger North Conservation Reserve SCI would be required, or until a more detailed local natural resource plan or management plan is prepared). Given that old-growth white and red pine are reliant on ground disturbance, especially fire, it is possible that these areas may require a separate management regime.

7.4 WILDLIFE MANAGEMENT

The wildlife within the Algoma Headwaters Signature Site, including Ranger North Conservation Reserve, will be managed on a sustainable basis, in accordance with current policies and legislation (e.g. Fish and Wildlife Conservation Act, Migratory Birds Convention Act). Wildlife management will be directed towards the maintenance and/or enhancement of diverse and healthy populations. Research of species-at-risk is ongoing within the signature site.

Nuisance animals may be trapped and removed directly by, or under the supervision of, the Ministry of Natural Resources. This control will be exercised as a last resort, and only when it is essential for the protection of human health and safety, the health of animal species, or the protection of infrastructure.

Opportunities for non-consumptive activities, such as wildlife viewing and hiking, will be encouraged within the signature site.

7.4.1 HUNTING AND BEAR MANAGEMENT AREAS

The Algoma Headwaters Signature Site lies within Wildlife Management Unit (WMU) 35. Hunting in the signature site area is for both small and large game, and hunting regulations for WMU 35 apply in the signature site, except where hunting is not permitted.

Hunting will continue within the Algoma Headwaters Signature Site, except where not permitted by zoning. Hunting is subject to sustainable wildlife management practices, zoning and management prescriptions, and the applicable Ontario hunting regulations. The only portions of the signature site where hunting will be discontinued is in the small nature reserve zone (NR-1 South Goulais River), the two development zones and the five access zones (refer to Figure 6:

Zoning). Restrictions approved in the final signature site strategy would require amendments to the Fish and Wildlife Conservation Act.

Portions of eight authorized bear management areas (BMAs) are contained within the Algoma Headwaters Signature Site. Operations on these existing bear management areas are permitted to continue, except in the portions affected by nature reserve and development and access zones, as identified above. Areas where hunting is not permitted in the approved signature site management strategy will be removed from the affected bear management areas. Short-term Land Use Permits issued for the autumn bear hunt camps will no longer be renewed within the provincial parks, and will be phased out in 2006. However, these are permitted within the Ranger North Conservation Reserve.

Transfer of bear management areas may be permitted where the current operator sells a bear hunting business to another operator and if the bear management area transfer is approved by MNR. If an operator surrenders a bear management area or if a bear management area is revoked, reallocation of the bear management area may occur following applicable screening processes. The management, applications for renewal or transfer will be assessed with due consideration to conservation principles and public safety.

Hunting, including bear hunting, will be permitted within the wilderness zone in the northeast portion of the signature site and all natural environment zones (see Figure 6).

7.4.2 TRAPPING

The Algoma Headwaters Signature Site lies within Wildlife Management Unit (WMU) 35, and all trapping regulations for WMU 35 will apply to the signature site. There are portions of 15 active, registered traplines within the Algoma Headwaters Signature Site.

Existing trapping will be permitted to continue in all zones of the provincial parks in the signature site, and within the Ranger North Conservation Reserve. Authorized trap cabins associated with registered traplines are also permitted to continue.

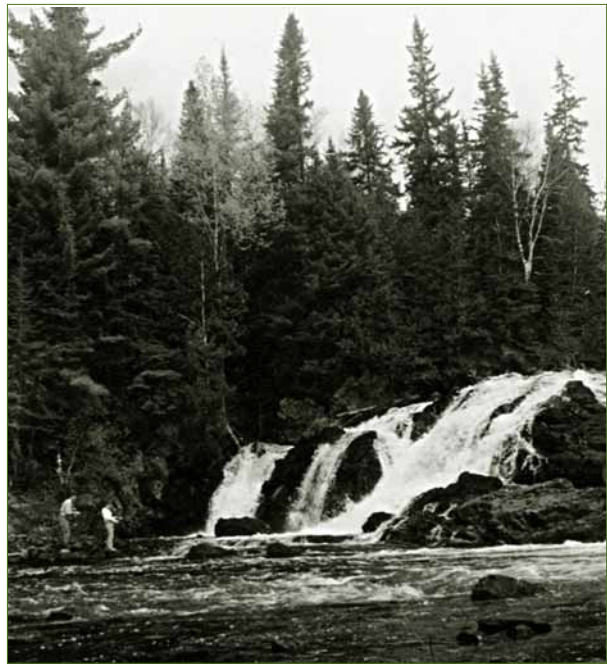
Transfer of existing trapping licenses and permits may be permitted, subject to review and approval by MNR, and following established allocation procedures. Transfer may occur when either a trapper surrenders a registered trapline, or the trapper privileges are revoked. In addition, trapline cabins are considered to be part of the trapline, and would also be considered for transfer with the trapline.

Subject to ecological considerations and implementation planning for the signature site, realignments such as the relocation of existing trails and cabins may be necessary, and would be evaluated by Ontario Parks on a case-by-case basis.

Within the signature site, new trap line operations, including trap line cabins and trails, will not be permitted.

7.5 AQUATIC ECOSYSTEMS MANAGEMENT

There are abundant aquatic and fisheries resources within the Algoma Headwaters Signature Site, and are protected under the Fish and Wildlife Conservation Act. The site contains a variety of water bodies, including approximately 175 lakes and 200 streams. Fishing is one of the most common activities carried out by visitors to the signature site, and is governed throughout the site by the Canada Fisheries Act and the pursuant Ontario fisheries regulations.



7.5.1 WATER MANAGEMENT

Baseline information for water quality and quantity may be established, where feasible, for representative aquatic habitats and for recreational purposes. In high-use areas (e.g. access and camping locations), water quality may be monitored where feasible, in accordance with provincial standards.

Commercial hydro-electric development is not permitted within the boundaries of the Algoma Headwaters Signature Site.

7.5.2 SAYMO LAKE DAM

The Saymo Lake Dam lies at the southern terminus of Aubinadong-Nushatogaini Rivers Provincial Park at the south end of Saymo Lake, and controls water flow from this system into Ranger Lake. It is approximately 1.6 metres high and 10.7 metres long. Although still functional, this dam is somewhat dilapidated, and an Emergency Preparedness Plan (2002) is in effect in the event that it fails.

A Dam Safety Assessment Report was prepared for this dam in 2001, and it was recommended that a new rock weir be constructed to replace this aging dam. An overflow weir at this location would still allow for the upstream impoundment of water, thereby maintaining existing water levels in Saymo Lake. This “over-toppable” weir would require no manual operation and very limited maintenance. It would also provide an opportunity for fish migration from Ranger Lake to Saymo Lake. A Class Environmental Assessment Project Plan (2002) was prepared for the Saymo Lake Dam which indicated that a replacement of this dam with a weir was preferred, and this will eventually occur as priority projects are completed. The replacement of the Saymo Lake Dam will depend on provincial priority and availability of funding.

7.5.3 FISHERIES MANAGEMENT

The Algoma Headwaters Signature Site will be managed to protect healthy aquatic ecosystems, including maintaining and/or enhancing a self-sustaining native-species fishery (e.g. brook trout, lake trout and walleye). *The Sault Ste. Marie District Fisheries Management Plan: 1988-2000* identifies strategies for the signature site area, and continues to provide direction for the management of the fishery that is now within the signature site (MNR 1988.) The Fish and Wildlife Conservation Act and the Canada Fisheries Act and pursuant Ontario Fishing Regulations govern fishing within the signature site.

Lake trout lakes designated in the Sault Ste. Marie and Chapleau District Land Use Guidelines (MNR 1983), and proposed to be included in the Crown Land Use Policy Atlas Policy Reports (MNR 2003) for the protected areas within the Algoma Headwaters Signature Site, are: Gord Lake, Megisan Lake, Saymo Lake, Gong Lake, Goulais Lake, Patter(son) Lake, Clove Lake, Prairie Grass Lake, Lance Lake and Ninegee Lake.

Sport fishing is permitted to continue within the Algoma Headwaters Signature Site, in compliance with relevant Ontario Fishing Regulations.

As specified in the Ontario fishing regulations, baitfish restrictions and special seasons apply in the following lakes, including special catch and possession limits:

- **GONG LAKE** (in Handleman and McIlveen townships) is a trophy lake trout lake, with slot sizes, lower limits and a shortened season.
- **LAKES WITHIN WAY-WHITE, SCHEMBRI, WLASY, SCRIVEN AND BRACCI TOWNSHIPS** are designated under the Ontario fishery regulations as high quality fishing lakes. Live baitfish is not permitted in these lakes, lake trout catch and possession limits are reduced, and special sanctuary status applies (i.e. shortened season).

Further fisheries direction for the Algoma Headwaters Signature Site will continue to occur in conjunction with the respective MNR District and includes the following:

- **COMMERCIAL FISHING** will not be permitted within the signature site.
- **INTRODUCTIONS OF NON-NATIVE FISH SPECIES** will not be permitted.
- **LIVE BAITFISH** will continue to be placed under existing restrictions described within the Ontario Fisheries Regulations to reduce the risk of accidental introductions.
- **FISH SANCTUARIES** may be designated on selected lakes within the signature site, if deemed necessary to protect fishery values (in consultation with appropriate District MNR staff).
- **ICE FISHING** restrictions are recommended on the following lakes to enhance fisheries values and protect remote tourism values: Torrance, Megisan, Affleck, Gord, Prairie Grass, Goulais, Ragged, Patter(son), and Quinn.
- **FISH STOCKING** would provide for the designation of a “put and take” fishery on lakes

that are road accessible. Such management options may be considered during implementation planning, but would depend on the availability of fisheries information, including creel and lake survey data.

- **FLY-FISHING** is the only method of angling permitted within the three-kilometre section of the East Goulais River that is within the boundaries of Goulais River Provincial Park (see Figure 3). The designation of additional fly-fishing areas may be considered within the signature site.
- **EXISTING AUTHORIZED COMMERCIAL BAITFISH HARVESTING** licenses are permitted to continue in the provincial parks, subject to conditions specified on the license. No new bait harvesting licenses will be permitted in any park. However, active licenses may be transferred where bait harvesting is an established permitted use. Within the Ranger North Conservation Reserve, baitfish harvesting is not permitted, however, harvest of other bait types (e.g. leeches, crayfish) may be permitted. *(Leeches are considered bait, and crayfish are considered baitfish, as specified in the Ontario Recreational Fishing Regulations Summary).*

A fisheries management strategy will be prepared for the Algoma Headwaters Signature Site, which would include public consultation. The restoration of signature site fisheries and aquatic habitats may be undertaken, where appropriate. Any decisions regarding fisheries management (e.g. stocking, change to seasons, sanctuaries, and ice fishing restrictions) would be done in conjunction with MNR District staff, would be subject to public consultation, and would be consistent with all applicable fisheries management plans and strategies.

7.6 CULTURAL RESOURCES

The management of cultural resources within the Algoma Headwaters Signature Site will be directed toward protection and the provision of heritage appreciation and research, where these activities do not impair features and values. Protecting cultural resources will be a high priority and is addressed through zoning, legislation and public education.

Implementation of measures to identify and protect sacred Aboriginal sites and traditions will also be a priority. First Nation communities have been invited to identify traditional heritage uses and sites and to explore approaches with MNR to protect Aboriginal heritage. The sensitivity of this information will be respected.

Ontario Parks will continue to work with the Ministry of Culture to inventory, protect and maintain archaeological and historic sites within Algoma Headwaters Signature Site. Further archaeological investigation will be pursued in an attempt to locate additional historical sites, including fur trade, logging and mining sites. Periodic inspection of all identified significant sites will be carried out by Ontario Parks staff, with protective controls established as required. The removal of artifacts or destruction of historical features is illegal and prohibited (Historic Sites Act, Provincial Parks Act, Public Lands Act.)

Archaeological assessments will be undertaken prior to development that is identified within the approved signature site strategy. As significant archaeological discoveries are made in the future, it may be necessary to amend the approved management strategy for the signature site (e.g. changes to park zoning, changes to development details, etc.).



RUFFED GROUSE (*Bonasa umbellus*)

8.0 OPERATIONS POLICIES

Implementation of the approved strategy will enable the Algoma Headwaters Signature Site to become operational, resulting in the provision of services and facilities for public use. In order to implement the direction given in the approved strategy, a business plan and an operating plan will be prepared. The use of partnerships may be considered in the operation of the signature site. Operations and management activities carried out by Ontario Parks within the Ranger North Conservation Reserve will require district approval.

The operating plan would provide staff with the necessary information required for daily operation of the signature site. The operating plan will include such topics as budget, staffing, occupational health and safety, maintenance schedules, enforcement and emergency services. The provisions of the operating

plan will be consistent with appropriate MNR and provincial park operating standards and will be reviewed annually, and updated as required.

The following summarizes the operational policies regarding access, recreation management, natural heritage education, and research.

8.1 ACCESS

The Algoma Headwaters Signature Site contains a network of forest access roads that have had long-term use which pre-dates the designation of the protected areas. Within provincial parks and the conservation reserve, mechanized travel will be restricted to protect natural, cultural and recreational features and values, to maintain the ecological integrity of the protected areas and to manage the general distribution of visitors within the protected areas.

8.1.1 AUTHORIZED ROADS

Access to and within the protected areas within the Algoma Headwaters Signature Site will be limited to the use of existing, authorized roads and trails, as detailed below (Figure 3). No new roads or trails for mechanized travel will be permitted within the provincial parks. Within the conservation reserve, proposals for new trails for mechanized travel may be considered, if they are determined to be appropriate and are in keeping with protected area values.

All authorized roads located within the three provincial parks are governed by the *Highway Traffic Act*. This legislation prohibits the use of ATVs on park roads (see Section 8.1.3: Snowmobiles, ATVs and Off Road Vehicles). Roads within the conservation reserve are governed under the *Public Lands Act* and/or the *Crown Forest Sustainability Act*.

There are individuals or groups who are “authorized resource users” who have resource use licenses or permits or who own land with the right to use mechanized equipment. These authorized users may be issued a letter of authority to use motorized vehicles to carry out those activities associated with their authorized use within the signature site. These include trappers, bear management area operators and baitfish operators. Existing private property owners and land use permit holders within the signature site are also authorized to travel by mechanized means to access their property only.

Trails associated with existing traplines are for use only by the registered trapper and their designated assistant(s). Public use of these trails is not permitted.

The abandoned bridge in Wlasy Township on the Dismal Lake Road will be inspected for structural integrity, and if it is determined to be unsafe, would be repaired or replaced.

An Integrated Resource Access Strategy will be developed to detail all aspects of access within the signature site’s provincial parks and conservation reserve. (Users of roads in the vicinity of the signature site include Ontario Parks visitors, forest industry users, and the general public.) This would address safety concerns for the public use of forest access roads that are being maintained and used by the forest industry.

The primary access to and within the Algoma Headwaters Signature Site requires the use of authorized roads and trails, as specified in the following sections. Secondary access by air and boat is also addressed here.

FOREST ACCESS ROADS

The Integrated Resource Access Strategy would include all existing authorized roads through or adjacent to the Algoma Headwaters Signature Site. This is consistent with direction in Ontario’s Living Legacy Land Use Strategy. “... *Existing forestry access roads that are essential for continued access beyond the area for forest management... will continue to be available for access, provided alternative access does not exist and road relocation is not feasible. Continued use will include maintenance and may also include future upgrading.*”

The main roads within the signature site are the existing forest access roads which MNR/Ontario Parks and the forest industry are in agreement to be managed and will continue to be used and maintained by the forest industry (MNR 2001). The forest industry will use existing authorized staging areas on forest access roads, with conditions for use and/or restrictions being determined during implementation planning.

Minor road realignment of forest access roads may occur, if necessary, for upgrading, safety and maintenance purposes, provided park values are protected. *Environmental Assessment Act* requirements would be met. Every effort shall be made in the future to realign those sections of the Whitman Dam Road that lie within Goulais River Provincial Park to locations outside the park boundary.

The 2001 roads agreement between MNR, Ontario Parks, Sault Ste Marie District with sustainable forest license holders Clergue Forest Management Inc. and North Shore Forest Inc., specifies terms and conditions for the forest industry to use and maintain forest access roads through and adjacent to the Algoma Headwaters Signature Site. This agreement recognizes the forest industry’s ongoing and future need to access and maintain specific, identified roads (see Tables 2a and 2b in Appendix B for a complete listing of the existing authorized

Forest Access Roads). The requirement and use strategies for these existing authorized roads will be determined through the forest management planning process, with input from Ontario Parks and MNR districts. Road use strategies will be implemented through the Algoma Forest and the North Shore Forest management planning annual work schedules.

Wayside aggregate pits used by the sustainable forest license holders for forest industry purposes and possibly Ontario Parks will continue to be available within the signature site (MNR, 1999). These wayside pits are used for sand and gravel extraction for the maintenance of roads, as proposed in forest management planning, and identified in annual work schedules. Use of wayside pits by the forest industry will be permitted to continue, subject to operating standards. No new gravel pits or public use of pits is permitted.

AUTHORIZED RECREATIONAL ROADS

In addition to the authorized Forest Access Roads listed in Appendix B, there are other existing roads that are authorized for recreational use within the signature site. (These appear in Appendix B – Table 3). Motorized vehicles will continue to be permitted on these roads).

Public use is permitted to continue on authorized recreational roads and forest access roads, as shown on Figure 3. Due to the presence of logging trucks and other forestry vehicles on forest access roads, the safe public use of these roads is of concern and will be addressed through various approaches. These include, but are not limited to, cautions cited in protected area literature, and the posting of appropriate signage on the Whitman Dam Road and on other forest access roads for the purpose of warning users of the need to be alert to industrial traffic.

Significant upgrades to the Torrance Lake Road would be required for public use and safe access.

8.1.2 CLOSED ROADS

To ensure the sustainability of protected areas' features and values, the following roads in Algoma Headwaters Signature Site will continue to be closed (Figure 3). Before the signature site was established, these road closures were in place under the authority of the Public Lands Act. However, with the regulation of the three provincial parks within the signature site in 2003, the authority for road closures in the provincial parks will now be under the Provincial Parks Act. These closed roads are:

- Megisan Lake Road
- Eileen - Coppens Lakes Roads
- Dead Lake Road

8.1.3 SNOWMOBILES, ATVs AND OFF ROAD VEHICLES

Ontario's Living Legacy Land Use Strategy states that travel by snowmobiles, ATVs and off-road vehicles for recreational purposes on existing authorized trails will be permitted to continue (MNR 1999). Furthermore, some individuals and/or groups as resource users would retain the right to use ATVs and off-road vehicles within protected areas, according to the terms of their authorized resource use (e.g. trapping).

A protected areas recreational trail plan will be developed to identify and describe the terms and standards for authorized trails and periodic monitoring of trail conditions within protected areas.

MNR has worked extensively with the Ontario Federation of Snowmobile Clubs (OFSC) to establish an authorized trail, which is governed by the *Ontario Snow Vehicles Act* (RSO. 1990). There are three locations where this trail is situated within the boundary of the Algoma Headwaters Signature Site. These sections of the trail are as follows:

- A portion of the Point Lake Road (a 10 kilometre section between Turtle Lake and Graham Lake)
- The Mile 23 bridge access on the Whitman Dam Road
- The Tepee Lake bridge on the Whitman Dam Road.

No authorized snowmobile trails have been identified in the Ranger North Conservation Reserve. In general, off-trail use of snowmobiles is not permitted. However, off-trail use is permitted for licensed trappers to access their traplines and for licensed bait harvest operators to conduct bait harvest operations. Off-trail use of snowmobiles is also permitted for the direct retrieval of large game by hunters. In all these cases, off-trail use is only permitted provided that the protection of the site's values is not compromised. Should the impact of off-road ATV and snowmobile use degrade the landscape, the Ministry of Natural Resources will re-evaluate these permitted uses and determine a new strategy.

To protect fisheries, tourism and recreational values, and ensure their sustainability, snowmobile access will not be permitted to the following lakes:

- Torrance
- Megisan
- Affleck
- Gord
- Prairie Grass
- Goulais
- Patter(son)

Recreational ATV and off-road travel will be addressed in provincial parks as follows:

- **ALGOMA HEADWATERS PROVINCIAL PARK:** Within this park, ATVs and off-road vehicles are currently authorized only on the Point Lake Road, which was originally built to provide forest access into Crown allocations. However, for public safety reasons, ATV and off-road vehicle travel on the Point Lake Road would no longer be authorized, once forest industry returns to upgrade and commences use of the Point Lake Road. The timing and requirements for the use of this road will be identified during

forest management planning (FMP) process, and prior notice to closure of the Point Lake Road to ATV and off-road vehicle travel will occur at that time. In the meantime, ATV and off-road vehicle travel within Algoma Headwaters Provincial Park will be allowed as a non-conforming use. (All aspects of access related to the signature site will be addressed in the Integrated Resource Access Strategy which would be prepared during the implementation of this strategy).

- **GOULAIS RIVER PROVINCIAL PARK:** ATVs and off-road vehicle travel will be authorized only on the Saddle Lake Road and bridge crossing. ATVs and off-road vehicle travel will be allowed as a non-conforming use only on the Whitman Dam Road within the natural environment zone within Goulais River Provincial Park.
- **AUBINADONG-NUSHATOGAINI RIVERS PROVINCIAL PARK:** There will be no authorized ATV and off-road vehicle trails permitted.

Within the Ranger North Conservation Reserve, no authorized trails for the use of ATVs and off-road vehicles have been identified. Similar to snowmobiles (see above), the off-trail use of ATVs and off-road vehicles will not be permitted, except by licensed trappers and bait harvest operators to conduct their respective business, and for the direct retrieval of large game by hunters.

Recreational snowmobiling, ATV and off-road vehicle travel on lands and waters contained within the Wilderness zone (W -1) in the northeast sector of Algoma Headwaters Provincial Park will not be permitted. However, some individuals and/or groups as resource users would retain the right to use mechanized travel within this wilderness zone, according to the terms of their authorized resource use (e.g. trapping). These authorized users will be issued a letter of authority to use motorized vehicles to carry out those activities associated with their resource licenses within protected areas.

8.1.4 AIRCRAFT LANDING

The landing of aircraft will be permitted within Algoma Headwaters Signature Site, except for waterbodies that are within the wilderness and nature reserve zones. Restrictions to aircraft landings recognize that there are exceptions for licensed resource uses and access to private lands.

Aircraft landing permits may be issued annually by Ontario Parks / MNR for waterbodies within the site's provincial parks, with payment of an applicable fee. (Details will be verified in the operations for Algoma Headwaters Signature Site). Aircraft landings are permitted within the Ranger North Conservation Reserve without an aircraft landing permit.

8.2 RECREATION MANAGEMENT

Recreation management will provide for a variety of recreational opportunities while attempting to minimize any negative environmental impacts that may occur to protected areas' natural, cultural and recreational values. Low intensity recreation that is compatible with signature site values will be encouraged. While it is recommended that a park permit must be purchased for overnight camping, it is recommended that there be no fee charged for day-use visitation.

Recreational activities in provincial parks that are not compatible with the signature site goal and objectives or with specific zones are prohibited or restricted (as outlined below). Prevention and control of incompatible recreational activities would be achieved through visitor education and enforcement of appropriate uses within the signature site, and within specific zones, as applicable (see Figure 6).

8.2.1 CANOE ROUTES AND HIKING TRAILS

There are several canoe routes within the Algoma Headwaters Signature Site. There are a few existing hiking trails within the Algoma Headwaters Signature Site, most of which are short and have developed through traditional use.

A recreational trail plan will be prepared to identify all the trails (e.g. hiking trails, canoe routes) in the protected areas and how they will be managed. These would include numerous portage trails, informal walking paths to view Whitman Dam Falls and Goulais Falls, and some nature trails of not more than two kilometres in length which have been developed on remote tourism lakes. There are also indistinct trails used to access old growth pine stands in the Ranger North Conservation Reserve. These trails may be upgraded for enhanced access.

Use of these existing hiking trails for non-mechanized travel will be permitted to continue. Expansion and/or enhancement of these trails may be permitted, pending case-by-case consideration within the overall trail plan.

It is recommended that the abandoned bridge on the forest access road to Dismal Lake be retained to provide access to the potential hiking trail. This trail would enable viewing of old growth white pine forests in this vicinity, a significant feature within the Algoma Headwaters Signature Site. However, the bridge would first have to be evaluated for structural integrity, and possibly repaired or replaced. Ontario Parks may consider maintaining this bridge for non-motorized use only.

The wilderness zone in the northeast sector of Algoma Headwaters Provincial Park would be limited to hike-in and canoe-in access only. Within the overall trail plan for the protected areas, Ontario Parks will consider the development of new hiking trails and expansion of existing hiking trails in the wilderness zone, with consideration to maintaining wilderness values.



SAYMO LAKE

8.2.2 BOAT CACHES

Boat caches for commercial tourism purposes may be permitted within the Algoma Headwaters Signature Site. A boat cache strategy will be prepared for protected areas in the signature site to identify locations that are suitable for commercial boat caches. A regulation would be enacted under the effective legislation (the *Public Lands Act* for the conservation reserve and *Provincial Parks Act* for parks) to designate commercial boat cache locations. Persons wanting to cache a boat(s) for commercial tourism purposes within protected areas would submit their requests to Ontario Parks / MNR.

Upon review of the requested purpose, numbers and locations, approvals may be given and a fee would be charged for the issuance of a boat cache authorization decal. Within the site's provincial parks, authorization would be given by Ontario Parks, and by Sault Ste. Marie MNR District for the Ranger North Conservation Reserve. Any boats

and related equipment found within the signature site without an affixed authorized boat cache decal would be removed.

8.2.3 CAMPING

Camping will only be permitted at designated locations within the three provincial parks. It is recommended that park fees be charged for overnight camping, but not for day-use visitation.

Small areas for overnight car camping may be developed at Quinn Lake (A-1), west of Gong Lake (A-3), Ragged Lake (D-1) and Friendly Lake (D-2). Roofed accommodation provided by MNR such as yurts may be considered within development (D-1 & D-2), natural environment (NE-1 & NE-2) and wilderness (W-1) zones.

While camping is permitted within the Ranger North Conservation Reserve, this activity will be monitored to ensure that it is consistent with protected area values. Should environmental impacts

occur as a result of this use, then policies regarding camping within the conservation reserve will be re-evaluated (Ranger North Conservation Reserve: Statement of Conservation Interest, MNR, 1999).

Canoe-in, boat-in and hike-in campsites may be developed, in accordance with the trail plan and implementation planning to provide backcountry camping opportunities throughout the protected areas.

8.3 HERITAGE EDUCATION

There may be opportunities to enhance public awareness of the signature site through signage, education and self-use natural heritage education. Education, information and interpretation are key to enhancing visitor awareness about the site's natural and cultural features, facilities and services.

Themes for natural heritage education may include, but are not limited to:

- old growth forests - white pine, sugar maple and yellow birch and black spruce
- headwaters of major rivers
- significant glacial features
- forest fire on the landscape
- cultural heritage features and values (e.g. traditional travel methods, Aboriginal place names and meanings, traditional practices including ceremonies, etc.)
- species at risk - status for vulnerable (special concern), threatened and endangered species and their habitat needs in Ontario

A Natural Heritage Education strategy would identify self-use and self-guided opportunities for heritage appreciation of the protected areas. It may include the development of signs, interpretive materials and trails, and self-use facilities. Potential sites for self-guided trails may include the following locations as part of an overall signature site trail plan:

- Eileen and Coppens Lakes
- Dismal Lake
- Moon Lake
- Domtar Road Rock Barrens
- Traditional canoe routes
- Scenic falls – Whitman Dam Falls and Goulais Falls

The priority for development of interpretive and promotional material (e.g. signs, displays and brochures) will be determined through natural heritage education planning, which would commence once the signature site strategy is approved.

8.4 RESEARCH AND MONITORING

Ontario Parks and MNR research and information needs relate directly to the MNR's mandate and the goals and objectives of the protected areas. Research will be encouraged in the Ranger North Conservation Reserve and the signature site's provincial parks, in order to provide a better understanding of the natural, cultural and recreational features and values and to advance the protection, planning, and management of the site.

Ongoing research and monitoring is required to address the wide range of environmental, social and economic factors necessary to administer an ecologically sustainable system of protected areas. It is important that research activities assess the quality of outdoor recreational experiences and visitor satisfaction.

Scientific research and monitoring by qualified groups and individuals which contributes to the knowledge, inventory and identification of natural, cultural and recreational features and values, will be encouraged. This would be in accordance with protected areas policies and procedures, as appropriate.

Partnerships may be established with universities, college, industry, government and non-government organizations, First Nations and other associations to advance applicable research. Technical support and assistance would be provided, where possible, by local Ontario Parks / MNR staff. Ongoing research projects within the signature site relate to species at risk and old growth white and red pine, with the assistance of partnerships with academic institutions. These studies are very significant in meeting the objectives for the protection and perpetuation of significant life science values within the protected areas.

All research and monitoring programs within the signature site's parks will be compatible with the goal, objectives and zoning prescriptions, of the associated park. Research projects require prior approval and must be conducted in accordance with Ontario Parks policy. Research must also meet all other applicable provincial requirements, and will be monitored by the MNR and Ontario Parks. Within the Ranger North Conservation Reserve, non-destructive scientific research, baseline studies and monitoring, and outdoor education will also be considered a priority, and will be actively promoted.

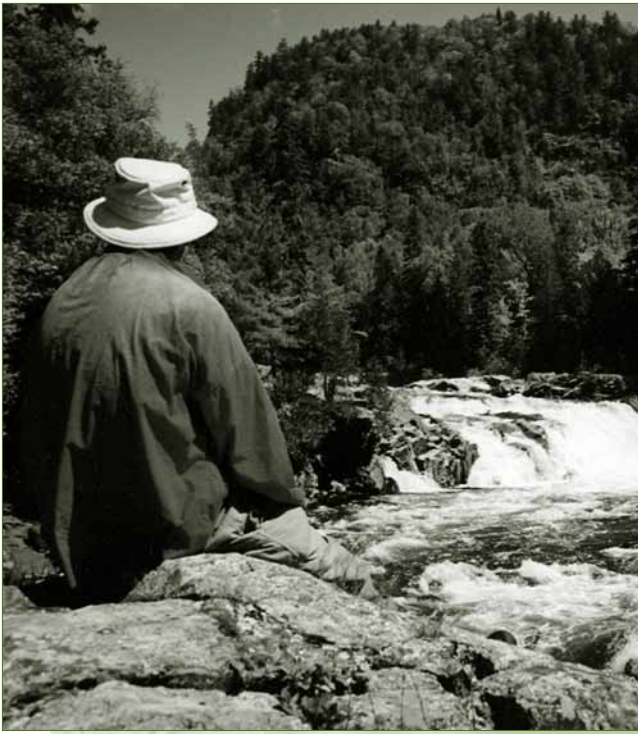
Any archaeological research would also require approval and monitoring by the Ministry of Culture. Should significant features or resources be found after the management strategy is approved, the strategy would be amended according to policy direction (e.g. major amendments require further public consultation) to ensure that appropriate management would be provided through the right zoning and revision of strategy policies.

Research and monitoring needs within the Algoma Headwaters Signature Site are diverse, and include the natural, cultural and recreational aspects of the site. Specific research projects which may be undertaken are:

- field archaeological inventory of cultural heritage features and values
- species at risk
- old growth white and red pine, sugar maple and yellow birch and black spruce ecosystems (inventory, structure, function, bio-diversity, regeneration and succession, etc.)
- effects of fire suppression on old growth forests
- fisheries studies – lake assessments on stocked lakes and lake trout lakes
- survey of visitation and use of protected areas
- socio-economic study – for signature site and old growth ecosystems

Research and monitoring priorities as determined to date in the development of this preliminary strategy are listed in Table 1A: Operations Implementation which appears in Section 9.2.

All research and monitoring programs require the approval of Ontario Parks / MNR, and are subject to policy and related legislation.



GOULAIS RIVER FALLS

9.0 DEVELOPMENT POLICIES

All development outlined in this preliminary strategy for protected areas will meet the requirements of: the *Environmental Assessment Act* (1990); MNR 59/2; Class EA for Resource Stewardship and Facility Development (2003); Class EA for MNR Provincial Parks and Conservation Reserves, including screening and approval through implementation planning. There may be opportunities and benefits with outside assistance and funding by partners.

Clergue Forest Management Inc. and North Shore Forest Inc., specifies terms and conditions for the forest industry to use and maintain forest access roads through and adjacent to the Algoma Headwaters Signature Site (Appendix B). Ontario Parks and MNR districts will jointly approve all

road maintenance required by the Roads Agreement prior to implementation by the forest industry.

This preliminary strategy identifies priorities for new development, which would be implemented through business and work program planning and consistent with Environmental Assessment Act requirements for provincial parks and conservation reserves. New development would be based on priority, and the availability of human and financial resources. It would be carried out in accordance with approved protected area policies, procedures and guidelines (e.g. site planning for development in provincial parks).

Development will not take place in nature reserve and wilderness zones of provincial parks, except for necessary signs, trails and facilities that are consistent with the zoning direction given in the approved strategy.

9.1 STRATEGY IMPLEMENTATION

Implementation of development that is identified in this preliminary strategy would address the development needs of the respective protected area. The provincial parks and Ranger North Conservation Reserve are governed by different policy and legislation, therefore, the approaches to implementation may vary. MNR Districts and Ontario Parks would work very closely, to address site development in an efficient and effective means; managing access, visitor distribution, camping and trail infrastructure according to the needs identified in this preliminary strategy.

For the provincial parks within the signature site, implementation planning will guide the development of the provincial parks. Implementation planning follows the direction in the approved strategy, and would include

development consistent with the following:

- The 2001 Roads Agreement between MNR / Ontario Parks & Clergue Inc.
- Integrated Resource Access Strategy
- Site plans for backcountry and road accessible camping (facility development)
- Waste Management Phase Out Strategy
- Recreation Strategy (including a Trail Plan)
- Natural Heritage Education Strategy
- Visitor Safety Plan

Implementation planning for Ranger North Conservation Reserve is outlined within the Statement of Conservation Interest (MNR, 1999) and may include integration with the implementation direction for provincial parks in the following:

- Monitoring of activities to ensure adherence to management guidelines
- Preparing a fact sheet highlighting the site's natural heritage values
- Research and monitoring studies, including a survey of pine recruitment, with appropriate action taken to protect old growth pine values
- Consideration of acquisition of private properties adjacent to the signature site
- Scientific research, including baseline studies and monitoring, would be actively promoted
- Recreation management needs relative to the signature site trail plan and recreation strategy.

Implementation of Ranger North's Statement of Conservation Interest and the direction contained in the approved strategy will be the shared responsibility of Sault Ste. Marie MNR and Ontario Parks staff. Partnerships may be pursued to address management needs. Should other management and development decisions arise that are not addressed within the Ranger North Conservation Reserve's Statement of Conservation Interest, then an amendment to this strategy will be required.

9.2 PHASE-IN IMPLEMENTATION

Tables 1A and 1B provide a summary of proposed resource stewardship, operations and development projects that have been identified for the signature site during the planning process to create this preliminary strategy.

Implementation of the approved strategy will make the signature site operational, resulting in the provision of services and facilities for public use. The operating plan will include details on site management and the provision of services, and for the provincial parks, the implementation of permit issuing and fee collection. Within the provincial parks, there will be collection of fees for overnight camping and aircraft landing permits, but not for day use visitation. Fees will not be collected for visitation to the Ranger North Conservation Reserve.

The phase-in of resource stewardship, operations and development of the Algoma Headwaters Signature Site is prioritized in two phases, as outlined in the following tables:

TABLE 1A: PHASE 1 – IMPLEMENTATION

PROJECT	LOCATION	TYPE	COMMENTS
Implement Operations of the Signature site	Algoma Headwaters, Goulais River & Aubinadong – Nushatogaini Rivers Provincial Parks and the Ranger North Conservation Reserve	Prepare Business Plan and Implementation Strategy Development of an Operating Plan	There will be no fee collection for Ranger North Conservation Reserve
Signage	To be determined in Sign Plan	Prepare Sign Plan park boundary signs & visitor safety notices	To meet operations standards, for access mgt. & safety of visitors on forest access roads; also to post portages & nature reserve zones, etc.
Campsite Upgrade	Waterway Parks	Clean-up, privies, fire pits	Operations standards
Access Point Upgrade	Ragged, Gong, Hound, Torrance, Quinn, Whitman Dam	Clean-up, add privies, boat launch, campsites	Operations standards
Natural Heritage Strategy	Identification of themes & self use approaches & methods to deliver heritage appreciation messages to all visitors	Fact sheet, map, self-guided trails & site descriptions, interpretive displays	Possibly with partnerships
Signature Site Trail Plan, Site Planning & Construction	Moon Lake, Dismal Lake, Coppens Lake, Eileen Lake and Domtar Rock Barrens	Hiking trails for camping & interpretive purposes.	
Cultural Heritage Research (Archaeological and Historical)	High potential areas within Signature Site	Inventory of high-potential archaeological locations & features (may contribute to the designation of further historic zones.)	Field work - First Nations' & public input & field work may provide additional information. Possibly with partnerships
Whitman Dam Road Relocation Study	14.5 kilometers of Whitman Dam Road through South Goulais Nature Reserve Zone	Long term strategy to relocate Whitman Dam Road to protect heritage features & values.	



TABLE 1A: PHASE 1 – IMPLEMENTATION - CONT.

PROJECT	LOCATION	TYPE	COMMENTS
Recreational use of the Point Lake Road	10 kilometers of the Point Lake Road would be evaluated to determine when recreational ATV & off-road vehicle use would not be allowed on the road with forest industry use.	FMP consultation with parks input	Forest management use & user safety needs
Research and monitoring (Wildlife)	Goulais River	Ongoing	Ongoing partnerships
Research and monitoring (Forestry)	All protected areas	Study of old growth red & white pine – esp. recruitment	Ongoing partnership with Sault College
Research and monitoring (Fisheries)	Turtle, Moon, Gong, Quinn, Dismal, Dyson, Patter, Goulais, Affleck, Coppens, Eileen, Torrance, Megisan, Prairie Grass, Gord Lakes, and Goulais River	Lake Surveys on stocked lakes Lake Trout Lakes	Possibly through partnership (e.g. Sault College)
Waste Management Study	Ragged Lake	Prepare Closure & Rehabilitation Plan	
Research (Visitation)	Monitor visitation at access & development zones, & at backcountry campsites	Spring, summer, fall weekend questionnaire	Field work (possibly with partnerships)

TABLE 1 B: PHASE 2 – IMPLEMENTATION

PROJECT	DESCRIPTION	SIZE	COMMENTS
Backcountry Operations: Implementation and Improvements	Backcountry trails, campsites & canoe route improvements	Several sites	Implement fee Collection
Torrance Lake Road	Road Upgrade & Access Zone	7 km. length	Site Plan required
Campground Development	Ragged Lake Friendly Lake	Several sites	Site Plan required Implement fee Collection
Whitman Dam Falls	Day-use parking	Small parking lot	Site Plan required
Access Point Development	Gong Lake Quinn Lake	Several campsites	Site Plan required Implement fee Collection
Whitman Dam Road Relocation	Implement over time, as funding permits	14.5 km. of existing road	Species-at-risk and recreation management
Saymo Lake Dam	Replace with overtoppable rock weir	1.6 m high x 10.7 m long	If / when Provincial priority & funding allow

9.3 PARTNERSHIPS

During the implementation phase, opportunities for partnerships will be encouraged for projects relating to resource stewardship, operations and development of the protected areas within the Algoma Headwaters Signature Site. Ontario Parks/ MNR will encourage building partnerships and business agreements for the mutual benefit of all interests, including protecting the site’s resource features and values. Research partnerships for species at risk and old growth forest studies within the signature site are ongoing between Ontario Parks / MNR districts and academic institutions.

Partnerships may be pursued with the forest industry, area communities, First Nations,

environmental organizations, local outdoor recreational groups, snowmobile and ATV clubs and others. Opportunities are encouraged that may contribute to local economies.

9.4 MARKETING

A marketing plan will be prepared for Algoma Headwaters Signature Site, which is consistent with the overall marketing strategy of Ontario Parks and the Ministry of Natural Resources. The nine signature sites are featured areas that have extremely significant tourism and recreation potential that merit increased planning, management and promotion.

This marketing plan for Algoma Headwaters Signature Site would develop strategies for promoting the signature site on the basis of its natural and cultural heritage values, and recreational and tourism opportunities. The feasibility of promoting and marketing the site as a year-round destination will be explored.





CANOE AT RAGGED LAKE PORTAGE

10.0 STRATEGY AMENDMENT AND REVIEW

The preliminary strategy will be reviewed by the public to develop an approved Algoma Headwaters Signature Site Strategy.

The review would be implemented in the following manner:

- Review initial management planning process
- Update background information and data on signature site resources and visitor use
- Review strategy for adherence to implementation priorities and provincial policies
- Review Management Topics and identify new issues and concerns and address any outstanding issues in amendment document for public review
- Review and receive approval for plan amendment



MEGISAN LAKE SUNSET

11.0 SUMMARY OF PUBLIC CONSULTATION

Public consultation is an essential part of the planning process in the development of the Management Strategy for the Algoma Headwaters Signature Site. The planning process began in July 2002, with the release of the Invitation to Participate, and Terms of Reference for the planning process.

During this planning process, the opportunities for public consultation were:

- Stage 1: Invitation to Participate and Terms of Reference (July 2002)
- Stage 2: Release of Background Information (January 2003)
- Stage 3: Release of Management Options (July 2003)
- Stage 4: Release of Preliminary Management Strategy (Winter 2004/05)

Each stage included the following: newspaper advertisements, distribution of notices to stakeholders and a mandatory contact list, posting project proposal on the Environmental Bill of Rights (EBR) Registry, distribution to the Park Zone and MNR district offices, and to the MNR Information Centres in Toronto and Peterborough.

To date, two information centres have been held at various locations. *Background* information centres were held in January 2003 in Sault Ste. Marie, Searchmont, Chapleau and Thessalon, with a total of 204 people attending (generating 87 responses.) In August 2003, *Management Options* information centres were held in Sault Ste. Marie, Searchmont and Chapleau. There was a total attendance of 75 people at the three locations (generating 43 responses), as well as a total of 287 single-issue 'petition/form letters'.

All public input has been taken into consideration during this planning process, including the "*Recommendations for the AHSS Management Plan*", submitted by the Wildlands League in 2000. The dominant themes of the public's comments are reflected in the content of this preliminary strategy, and also appear in the Summary of Planning Topics (Section 2.0.) Input was received in the form of letters (41), comment sheets (180), form letters regarding access (287), and development proposals (2), as well as through meetings and phone calls.

A detailed summary of the input received in response to this preliminary strategy will be presented with the approved Strategy for the Algoma Headwaters Signature Site.



MARSH PINKS (*Calopogon pulchellus*)

12.0 SELECTED REFERENCES

- Acres International (Niagara Falls, Ont),
Saymo Lake Dam:
- *Dam Safety Assessment Report* (2001)
 - *Emergency Preparedness Plan* (2002)
 - *Class Environmental Assessment - Project Plan Report* (2002)
- Crins, W.J., *Life Science Gap Analysis for Site District 4E-3*, Ontario Ministry of Natural Resources, Central Region, Huntsville, 1996
- Dalla Bona, Luke (Woodland Heritage Services Ltd.), *Algoma Headwaters Signature Site: Stage One - Cultural Heritage Assessment - Pre-field Phase*, Sault Ste. Marie, July 2001
- Dalla Bona, Luke (Woodland Heritage Services Ltd.), *Algoma Headwaters Signature Site: Stage Two - Cultural Heritage Assessment - Field Phase*, Sault Ste. Marie, February 2002
- Deloitte & Touche, *Quantification of the Economic Value of Forestry, Tourism, Recreation and Other Industries and Activities within the Megisan Area - Final Report*, (prepared for Megisan Lake EA project), Guelph, September 1993
- Environmental Assessment Act*, R.S.O. 1990
- Frey, E. and D. Duba, *Earth Science Reconnaissance Survey of the Algoma Headwaters Signature Site*, Kelowna, B.C., 2002
- Geomatics International Inc., *Field Survey of Life Science Resource Features for the Megisan Lake Area Environmental Assessment*, Burlington, Ontario, 1993
- Gunn, J.M. and R. Sein, *Effects of Forestry Roads on Reproductive Habitat and Exploitation of Lake Trout in Three Experimental Lakes*, MNR, Aquatic Ecosystem Science, Cooperative Freshwater Ecology Unit, Laurentian University, Sudbury, Ontario, 2000
- Iles, N., *Reconnaissance Inventory to Locate Old White and/or Red Pine Stands in Site Region 4E of the Ministry of Natural Resources*, OMNR, Northeastern Region, Sudbury, 1990
- Jones, S. and W. Crins, *Natural Heritage Areas and Proposed Park Alternatives for Eco-District 4E-3*, Ministry of Natural Resources, 1998
- Kershaw, H.M., *Natural Establishment and Early Growth of Eastern White Pine and Red Pine in the Great Lakes - St. Lawrence Forest: An Annotated Bibliography*, Ontario Forest Research Institute, OMNR, Forest Fragmentation and Biodiversity Project, Technical Report Series # 8, Sault Ste. Marie, 1993
- Knudsen, R., *Recreation Inventory Report: Algoma Headwaters Signature Site*, Ontario Parks, Sault Ste. Marie, 2002

- North-South Environmental, *Life Sciences Report: Algoma Headwaters and Adjoining Waterway Provincial Parks*, Burlington, Ontario, 2001
- Nobel, Terry, *Assessment of Natural Areas and Features for the Northern Portion of the Northern Deciduous- Evergreen Forest – Site Region 5E*, (prepared for OMNR, Northeast Region, Sudbury, Ont.) Thunder Bay, 1991
- Ministry of Natural Resources / Ontario Parks - Algoma Headwaters Signature Site documents:
- Management Options (July 2003)
 - Background Information (November 2002)
 - Interim Management Statement (August 2001)
 - Terms of Reference (July 2002)
- MNR / Ontario Parks, *Roads Agreement with Clergue Forest Management Inc. and North Shore Forest Management Inc.*, 2003
- MNR, *An Environmental Assessment of Timber Management on Crown Lands in the Megisan Lake Area (Draft)*, Sault Ste Marie, January 1996
- MNR, *Ontario's Living Legacy – Land Use Strategy*, July 1999
- MNR, Ranger North Conservation Reserve: Statement of Conservation Interest, Sault Ste Marie District, 1999
- MNR, *OLL Policy Clarification for Provincial Parks; OLL Policy Clarification for Conservation Reserves*, September 2000
- MNR, *A Framework for Signature Site Strategies*, July 2003
- MNR, *Signature Site Planning Framework for the Northeast Region*, 2000
- MNR / Ontario Parks, *Project Description: Algoma Headwaters Signature Site*, Sault Ste. Marie, 2001
- MNR, *Fire Management Policy for Provincial Parks and Conservation Reserves (Draft)*, May 2003
- MNR, *Conservation Reserves: Policies and Procedures*, Lands and Waters Branch, 1997 (including *Public Lands Act: PL 3.03.05*, 1997)
- MNR, *Policy Clarification for Provincial Parks* (as amended by Ontario's Living Legacy Land Use Strategy), September 2000
- MNR, *Policy Clarification for Conservation Reserves* (as amended by Ontario's Living Legacy Land Use Strategy), September 2000
- MNR, *Project Description: A Study of the Social and Economic Benefits associated with the Nine OLL Signature Sites*, Peterborough, 2001
- MNR, *Chapleau*:
- District Land Use Guidelines, 1983
 - Fisheries Management Plan 1989-2000
- MNR, *Sault Ste. Marie*:
- District Land Use Guidelines, 1983
 - Fisheries Management Plan 1988 - 2000
 - District Lake Survey files
 - District Values mapping (NRVIS)
- MNR, *Blind River*:
- District Land Use Guidelines, 1983
- MNR, *Ontario Provincial Parks Management Planning and Management Policies*, Toronto, 1992
- MNR, *Ontario Provincial Park Management Planning Manual*, Toronto, 1994
- North-South Environmental, *Life Sciences Report: Algoma Headwaters and Adjoining Waterway Provincial Parks*, Burlington, Ontario, 2001
- Noble, Terry, *Assessment of Natural Areas and Features for the Northern Portion of the Northern Deciduous-Evergreen Forest – Site Region 5E* (prepared for OMNR, Northeast Region, Sudbury, Ont.), Thunder Bay, 1991
- Ontario Parks, *The Ontario Parks Business Plan*, Peterborough, 2000/01
- Ontario Provincial Parks Act*, R.S.O. 1990
- Public Lands Act*, R.S.O. 1990
- Pollock, J.W. (Settlement Surveys Ltd.), *Ethno-history and Aboriginal People's Land Use: Megisan Lake Area Environmental Assessment*, New Liskeard, 1993

Wildlands League and The Friends of Algoma
Highlands Park, *Recommendations for the
Algoma Headwaters Provincial Park
Management Plan*, Toronto/Sault Ste. Marie,
September 2000

Wildlands League, *A Sense of Place: People and
Communities on the Road to a New Northern
Economy*, Toronto, 1998





APPENDICES

APPENDIX A:	GLOSSARY OF TERMS
APPENDIX B:	FOREST ACCESS ROADS
TABLE 2A:	FOREST INDUSTRY ACCESS ON THE ALGOMA FOREST
TABLE 2B:	FOREST INDUSTRY ACCESS ON THE NORTH SHORE FOREST
TABLE 3:	RECREATIONAL ROADS IN ALGOMA HEADWATERS SIGNATURE SITE
APPENDIX C:	POLICY REPORTS FOR PROTECTED AREAS WITHIN ALGOMA HEADWATERS SIGNATURE SITE



APPENDIX A: GLOSSARY OF TERMS

ANNUAL WORK SCHEDULE (FORESTRY) (AWS) - A statement, mainly tabular in form, showing the order and extent of all work of any nature by the forest industry, to be carried out during one year consistent with the forest management plan. The annual work schedule lists operations that were previously planned and approved in the forest management plan and are scheduled for implementation during that year.

ALL TERRAIN VEHICLE (ATV) -

- Has four wheels, the tires of which are all in contact with the ground
- Has a steering handlebar
- Has a seat that is designed to be straddled by the driver
- Meets requirements of the Motor Vehicle Safety Act (MCSA) and the National Standards Institute (ANSI standard)
- Is designed to carry a driver only and no passengers

AUTHORIZED ROADS AND TRAILS (EXISTING) - These are roads that have been agreed upon in a letter of agreement between MNR and a non-government interest. Snowmobile trails are the authorized trails of the Ontario Federation of Snowmobile Clubs.

AUTHORIZED RESOURCE USERS -

Individuals or groups who have been issued a letter of authority to use motorized vehicles to carry out those activities associated with their licenses within the signature site. These include trappers, Bear Management Area operators and baitfish dealers. Authorized resource users also include those existing private property owners and land use permit holders who may travel by mechanized means to access their property only.

BACKCOUNTRY RECREATION - Includes canoe tripping and backpacking in remote areas, accessible only by foot, or by self-propelled watercraft.

BEAR MANAGEMENT AREA (BMA) - A large area of Crown land that is managed by the bear management area licensee for the sustainable harvest of black bear.

COMMERCIAL TOURISM - A service or facility that offers resource-based recreational activities from a lodge and outpost camps. The operation must have a Resource-based Tourism License, which is issued by the Ministry of Northern Development and Mines.

COMMERCIAL BAITFISH LICENSE - An area of water that has been licensed for the purposes of commercially taking minnows and baitfish.

CONSERVATION RESERVE (CR) - A class of land established by Ontario Regulation 805/94 that is regulated under Section 4 of the Public Lands Act.

CROWN FOREST SUSTAINABILITY ACT (CFSA) - An Act of the Ontario legislature to provide for the sustainability of Crown forests and, in accordance with that objective, to manage Crown forests to meet social, economic and environmental needs of present and future generations.

CROWN LAND - All land (including land and water) held by the Province, both land which has never been sold and land which has been reacquired.

CROWN LAND USE POLICY ATLAS (MNR 2003) – a ministry strategic planning document that provides Crown land planning direction in policy reports concerning the use of land and water in a defined area (e.g. provincial park, conservation reserve, forest reserve). The Crown Land Use Policy Atlas will eventually replace the District Land Use Guidelines (OMNR 1983.)

DISTRICT LAND USE GUIDELINES (DLUG), 1983 – an MNR planning document which displays direction concerning the use of land and water in a defined area. It identifies where and how the Ministry intends to achieve its objectives in a specific district through the use of Crown land and through influencing the use of private land.

ENVIRONMENTAL BILL OF RIGHTS – Is an electronic bulletin board where the public can access information on changes affecting the environment in Ontario.

FLY FISHING – As defined in the Recreational Fishing Regulations Summary, 2004, for the East Goulais River “Only artificial flies can be used as bait.”

FOREST MANAGEMENT ACTIVITIES
Includes the production of wood and wood products, provisions for proper environmental conditions to sustain wildlife, protection against flooding and erosion, recreation and protection and production of water supplies.

FOREST MANAGEMENT PLAN (FORESTRY) (FMP) – A document containing pertinent information and prescriptions by which forest policy, aims, and objectives are translated into a continuity of specific treatments on a management unit for a specified period of years.

FOREST RESERVES – Areas of land and water that usually have mining claims and/or leases associated with them. Mineral exploration and mining can take place here, but forest management activities cannot.

HEADWATERS – The source (springs, bogs, lakes, etc.) and first order streams of a drainage system.

LAND USE PERMIT (LUP) – A permit issued under the Public Lands Act for occupation of Crown Land.

MINING CLAIM – A claim that has been staked and filed with the Ministry of Northern Development and Mines according to specifications under the Mining Act. The claim owns the mining rights to an area of Crown land that has been staked for mineral exploration and/or mining.

PATENTED LAND – (commonly known as private land) is a grant from the crown, made under the great seal of a Province or Canada, which conveys leasehold or freehold interest in public lands to an individual or group.

POLICY – A statement of direction developed for the purpose of guiding present and future actions and decisions.

PROVINCIAL PARK – Is an area of land and water protected and regulated under the Ontario Provincial Parks Act.

PUBLIC CONSULTATION – Through Public Information Centres, EBR registry, newspaper releases and mailings, the public can participate in the signature site planning process.

RESOURCE BASED TOURISM LICENSE (RBTL) – A license issued by the Ministry of Culture and Tourism, usually for commercial outpost camps and lodges that offer resource-based tourism.

ROADS (FORESTRY):

- **Primary Road:** A road constructed, maintained and used as part of the main all-weather road system which provides access to the management unit as a whole. Primary roads are essentially permanent roads, regularly maintained, with a life in excess of 15 years.
- **Secondary Road:** A road which is essentially a branch off a primary road, providing access to areas of operations within a management unit. These roads are not considered permanent and are not normally maintained beyond the five to 15 year period of their use.
- **Tertiary Road:** A road which is built for short-term use (i.e. up to five years,) for harvest and subsequent renewal operations. Tertiary roads may be un-surfaced or thinly surfaced and are not maintained beyond the period of their use. They are often reforested.

SIGNATURE SITE STRATEGY – This is a strategy that will guide the management of natural resources, park visitation, and all other uses within a signature site. The strategy is similar to a park management plan but applies to signature sites. The strategy stands for a 20-year period.

SPECIES AT RISK (SAR) – A species of fish or wildlife that has been assessed and designated as Extinct, Extirpated, Endangered, Threatened, Vulnerable or Special Concern, by the Committee on the Status of Endangered Wildlife in Canada (COSEWIC) and/or the Committee of the Status of Species-at-Risk in Ontario (COSSARO.)

STATEMENT OF ENVIRONMENTAL VALUES (SEV) – A document that outlines a proposal that is subject to the Environmental Bill of Rights.

STRATEGY (FORESTRY) – A strategy provides clear direction on how to implement a program policy. It is the means or steps to achieving an objective. Examples include: A Conservation Strategy for Old Growth Red and White Pine Forest Ecosystems for Ontario, Regional Wood Supply and Disposition Strategies.

SUSTAINABLE FOREST LICENSE (FORESTRY) (SFL) – Under Part III of the Crown Forest Sustainability Act, a renewable license to harvest forest resources in a management unit that requires the licensee to carry out renewal and maintenance activities necessary to provide for the sustainability of the Crown forest in the area covered by the license. This type of license may be granted for a term of up to 20 years.

TOURISM LAKE – Lakes designated in the Sault Ste. Marie District Land Use Guidelines that have commercial outpost camps and lodges.

TRAP LINE – An area of Crown lands and waters that is managed by the licensee for the sustainability of its fur-bearing animals.

YURT – A yurt is a portable, all-season round tent-like structure. Ontario Parks has adopted this type of structure as a form of roofed accommodation in selected provincial parks.

APPENDIX B: FOREST ACCESS ROADS

TABLE 2A: FOREST INDUSTRY ACCESS ON THE ALGOMA FOREST
(Agreement Roads associated with Algoma Headwaters Signature Site)

LOCATION	DESCRIPTION/USE	TOWNSHIP
#3 (N 46(49.836) (W 83(58.876)	Road	Gaudette
#5 (N 46(50.234) (W 83(58.891)	Road	Gaudette
#6 (N 46(50.820) (W 83(58.356)	Lavergne Lake Road	Daumont
#8 (N 46(51.720) (W 83(58.518)	Road (at south end of the Family Tree Plant)	Daumont
#11 (N 46(52.986) (W 83(59.160)	First Avenue	Laverendrye
#13 (N 46(53.830) (W 83(59.324)	Second Avenue & Gravel Pit	Laverendrye
#15 (N 46(54.359) (W 83(59.229)	Road	Laverendrye
#16 (N 46(54.621) (W 83(59.285)	Jeep Lake Road	Laverendrye
Hult Road & tertiary roads	Hult Road plus two Class 3 Roads off the Hult Road	Hodgins & Gaudette
Whitman Dam Road	Mile 23 Bridge Across the Goulais River	Lunkie
Saddle Lake Road	Across the Goulais River	Hynes
Whitman Dam Road	Tepee Lake Crossing	Gapp
Domtar Road	Any portion of Domtar Road that traverse through Park Boundaries	Gapp, Gaudry, Pine, McIlveen, McNie, Hoffman, Handleman, Ewen, Wlasy & Renwick
Ranger North West Road & Ranger North East Road	Any portion of the Ranger North West & Ranger North East Roads that traverse through Park Boundaries	Wlasy, Schembri, Scriven, Sherratt, Butcher, Ewen, Handleman & Hoffman
Way-White Road	Road	Wlasy & Way-White
Point Lake Road	Road	Gapp, Gaudry, Bracci & Scriven

LOCATION	DESCRIPTION/USE	TOWNSHIP
Dead Lake Road	Road	Hoffman & Butcher
Ewen Road East of Hound Lake	Road that forms Park Boundary	Ewen
Fyfe Lake Road	Staging Area	Ewen
Shortcut Road	Road & Canoe Route Portage	McIlveen
Shortcut/Ranger northeast Intersection (Gong L)	Staging Area	McIlveen
Mystery Lake Road	Road & Canoe Route Portage	McIlveen
McNie Road	Road & Bridge Across Nushatogaini River	Havrot

Source: *Roads Agreement Letter* (MNR/Ontario Parks-Clergue Forest Mgt.), December 2002

- * Class 1 generally describes a road with travelable speeds of 40-60kph with a minimum/maximum right of way width of 20-61 metres and a minimum sight distance of 100m.
- ** Class 2 generally describes a road with travelable speeds of 30-50kph with a minimum/maximum right of way width of 20-30 metres and a minimum sight distance of 60m.
- *** Class 3 generally describes a road with travelable speeds of 0-16kph with a minimum/maximum right of way width of 20-30 metres and a minimum sight distance of 60m.

This classification system has been taken from the MNR Forest Management Guidelines Manuals.

TABLE 2B: FOREST INDUSTRY ACCESS ON THE NORTH SHORE FOREST
(Agreement Roads in vicinity of Algoma Headwaters Signature Site only)

LOCATION	DESCRIPTION	TOWNSHIP	ROAD CLASS	FOREST INDUSTRY USE	TIME PERIODS
McNie Road	Road	Havrot/Ferrier	Class 3	Permanent	Long term
McNie Road (to north of power line)	Crossing installation	Havrot	Class 3		Planned for within next FMP

Source: *Roads Agreement Letter* (MNR/Ontario Parks - North Shore Forest Inc.), Dec. 2002.

TABLE 3: RECREATIONAL ROADS IN ALGOMA HEADWATERS SIGNATURE SITE

LOCATION	TOWNSHIP	DESCRIPTION
Mystery Lake Road	McIlveen	Road
Dismal Lake Road	Wlasy	Road & Bridge
Quinn Lake Road	Gapp	Road
7 Small Roads	Wlasy	Forest Tending Roads east of Ranger Northwest Road
3 Roads off Point Lake Road	Gaudry & Butcher	Forest Tending Roads
1 Road off Point Lake Road	Gaudry	Mining Claim Access
Moon Lake Road	Gaudry	Forest Tending Road
Hound Lake Roads	Ewen	Roads surround Hound Lake
Ragged Lake Dump Road including Road Extension to Simms Lake	Gaudry	Dump Access Road
Gong Lake Dump Road	McIlveen	Dump Access Road
Road West Off Whitman Dam Road South of Tepee Lake	Gapp	Road to Goulais River
Ragged Lake Road	Gaudry	Road to Ragged Lake
Gong Lake Road	McIlveen	Road east off Ranger Northeast Road to Boat Launch
Chubb Creek Road	Gaudry	Runs south off Domtar Road
Chubb Lake Road	Gaudry	East off Point Lake Road
Butter Tin Lake Road	Gapp	Northeast off Domtar Road to west side of Lake
Fyfe Lake Road	Ewen	South end of Fyfe Lake

APPENDIX C: CROWN LAND USE PLANNING ATLAS (CLUPA)

POLICY REPORTS FOR PROTECTED AREAS WITHIN ALGOMA HEADWATERS SIGNATURE SITE

(Updated to reflect proposed changes to policy made in AHSS Preliminary Strategy)

CROWN LAND USE POLICY ATLAS – POLICY REPORT

IDENTIFICATION: ID: P273

Algoma Headwaters
Area Name: Algoma Headwaters
Area (ha): 42,736
Designation: Provincial Park - (Ontario's Living Legacy)
Category: Natural Environment

MNR District(s): Chapleau, Sault Ste. Marie

DESCRIPTION:

The forests in the vicinity of Megisan and Gord Lakes provide good examples of at least seven major forest types growing in combination with, and influenced by, the low hills made up of sandy till deposits. White and red pine, sugar maple, black and white spruce, balsam fir, white birch and white cedar communities occur within this area. White pine is the dominant forest species in this landscape of low rolling hills, including some significant old growth stands. The Dyson Lake natural heritage area is the most diverse area in Site District 4E-3. This protected area is located within the Algoma Headwaters Signature Site, one of nine such areas featured in the Ontario's Living Legacy Land Use Strategy (1999.) Signature Sites are identified for their range of natural and recreational values and their potential to contribute to future recreation and tourism.

The following are designated as tourism lakes: Megisan, Gord, Prairie Grass, Patterson, Nokomis and Dyson Lakes.

LAND USE INTENT:

The park boundary includes the forests in the vicinity of Megisan and Gord Lakes and a portion of the Dyson Lake natural heritage area. Park management planning recognizes existing uses including the existing commercial tourism licenses. The existing Ranger North access road and other existing authorized roads necessary for industrial use, along with necessary wayside aggregate sites, will be maintained for use by the forest industry and recreational users. Access to some portions of the park is restricted to protect values. The intent is to manage this area as a natural environment class provincial park. Management of this area is governed by policies for provincial parks including direction as amended by Ontario's Living Legacy Land Use Strategy (1999) and most significantly, the Algoma Headwaters Signature Site Strategy.

MANAGEMENT DIRECTION:

Management of this provincial park is carried out in accordance with Ontario Provincial Parks: Planning and Management Policies (1992), Ontario's Living Legacy Land Use Strategy (1999) and most significantly, the Algoma Headwaters Signature Site Strategy. This document contains significant decisions regarding resource stewardship, operations, development and permitted uses for this protected area. Where a use is given on the chart below as 'may be' permitted (Maybe or Yes on the table,) the long-term management direction may be determined and/or refined through subsequent, more detailed planning such as resource plans. The following table reflects

the current policies for Algoma Headwaters Provincial Park, as presented in the Algoma Headwaters Signature Site Strategy. Readers should consult the above referenced documents for specific direction or further clarification.

ACTIVITY	PERMITTED	GUIDELINES
<i>Commercial Activities</i>		
<i>Aggregate Extraction</i>	No	
<i>Bait Fishing</i>		
Existing:	Yes	
New:	No	
<i>Commercial Fishing</i>		
Existing:	No	
New:	No	
<i>Commercial Fur Harvesting</i>		
Existing:	Yes	
New:	No	
<i>Commercial Hydro Development</i>		
<i>Commercial Timber Harvest</i>		
<i>Commercial Tourism (e.g. outfitting services, outpost camps, resorts/ lodges)</i>		
Existing:	Yes	Existing authorized facilities/operations are permitted to continue. Existing tourism facilities may be eligible for enhanced tenure, but not purchase of land.
New:	No	New tourism facilities/operations will not be permitted.
<i>Energy Transmission & Lands Communications Corridors (new)</i>		
	Maybe	Utility line crossings may be necessary to maintain essential public services. The number of new crossings will be discouraged and minimized where possible and they will be managed to reduce their impact on recreational and aesthetic values.
<i>Mineral Exploration and Development</i>		
	No	

ACTIVITY	PERMITTED	GUIDELINES
<i>Wild Rice Harvesting</i>		
Existing:	N/A	
New:	No	
<i>Land and Resource Management Activities</i>		
<i>Crown Land Disposition</i>		
Private Use:	No	No new land disposition for the private use of individuals is permitted, except for minor dispositions in support of existing uses (e.g., reconstruction of a septic system). Renewal of existing tenure for authorized uses is permitted.
Commercial Use:	Maybe	Land disposition for commercial use may occur, under the authority of a land use permit or lease, subject to approval through planning.
<i>Fire Suppression</i>	Maybe	Natural fire suppression is subject to further planning or an approved fire strategy. All human caused fires will be suppressed.
<i>Fish Habitat Management</i>	Maybe	May be considered through fisheries planning.
<i>Fish Stocking</i>		
Native Species:	Maybe	May be considered through fisheries planning.
Non-Native Species:	No	
<i>Insect/disease Suppression</i>	Maybe	May be considered through vegetation planning.
<i>Inventory/Monitoring</i>	Yes	
<i>Personal use permits for wood harvesting</i>	No	
<i>Prescribed Burning</i>	Maybe	May be considered through fire planning (e.g. fire plan).
<i>Roads (non-park use)</i>	Maybe	Where existing forest access roads are essential for management or recreation purposes, and alternative continued access beyond the park for forest road access does not exist, or road relocation is not feasible, existing roads will continue to be available for access. Continued use will include maintenance

ACTIVITY	PERMITTED	GUIDELINES
		and may include upgrading. Where other existing access roads are essential for continued access to in-holdings (i.e. Land Use Permits, patent land, etc.) within or beyond the park boundary, and alternative road access does not exist, or road relocation is not feasible, existing roads will continue to be available for access. Continued use will include maintenance. Exceptions for new roads are permitted for access required for forest reserves located within the park.
New:	No	
<i>Vegetation Management</i>	Maybe	May be considered through vegetation planning.
<i>Water Control Structure</i>		
Existing:	Yes	In some circumstances, the intention may be to remove existing water control structures over time. New structures may be considered through planning.
New:	Maybe	
<i>Wildlife Population Management</i>	Maybe	May be considered through planning.
<i>Science, Education and Heritage Appreciation Demonstration</i>	Maybe	May be considered through site planning
<i>Historical Appreciation – self guided</i>	Maybe	Support facilities to be identified through site planning.
<i>Nature Appreciation – self guided</i>	Maybe	Support facilities to be identified through site planning.
<i>Photography and Painting</i>	Yes	
<i>Research</i>	Yes	Subject to authorization by Ontario Parks
<i>Wildlife Viewing</i>	Yes	
<i>Recreation Activities and Facilities</i>		
<i>Aircraft Landing (water)</i>	Yes	With authorized landing permit from Ontario Parks

ACTIVITY	PERMITTED	GUIDELINES
<i>All Terrain Vehicle Use</i>		
On Trails:	Maybe	All terrain vehicle use can continue only on existing authorized trails (refer to Algoma Headwaters Signature Site Management Strategy).
Off Trails:	No	
<i>Camping</i>	Yes	Camping is permitted at designated sites only (refer to Algoma Headwaters Signature Site Strategy).
<i>Horseback Riding (trail)</i>	Maybe	
<i>Hunting</i>	Yes	Hunting is permitted, except in Nature Reserve zones, in accordance with Ontario Hunting Regulations.
<i>Mountain Bike Use</i>	Maybe	
<i>Motor Boat Use</i>		
Private:	Yes	
Commercial:	Yes	
<i>Non-motorized Recreation Travel</i>	Yes	
<i>Private Recreation Camps (Hunt Camps)</i>		
Existing:	Yes	Existing authorized camps are permitted to continue, and are eligible for enhanced tenure, but not purchase of land.
New:	No	
<i>Rock Climbing</i>	Yes	Rock climbing is permitted only in Areas designated for that purpose by the park superintendent as per O. Reg 952/01, s. 5.1 under the Provincial Park Act.
<i>Sailing and Sailboarding</i>	Yes	
<i>Scuba and Skin Diving</i>	Yes	
<i>Snowmobiling</i>		
On Trails:	Maybe	Snowmobile use may continue on existing authorized trails only (refer to Algoma Headwaters Signature Site Strategy)
Off Trails:	No	

ACTIVITY	PERMITTED	GUIDELINES
<i>Sport Fishing</i>	Yes	Consult the Ontario Recreational Fishing Regulations Summary.
<i>Trail Development</i>	Maybe	New trails may be considered through planning.

Note: The policies in this table do not supersede any Aboriginal or treaty rights that may exist, or other legal obligations.

Management of this provincial park is carried out within the context of provincial park policy, as amended by the policies for existing provincial parks outlined in the Ontario's Living Legacy Land Use Strategy.

SOURCE OF DIRECTION:

Algoma Headwaters Signature Site Interim Management Statement (2001)
Ontario's Living Legacy Land Use Strategy (1999)
Ontario Provincial Parks: Planning and Management Policies (1992)

EXPLANATION OF EDITS:

This Policy Report has been updated to reflect proposed changes to management and permitted uses for this protected area, as outlined in the Algoma Headwaters Signature Site Preliminary Strategy.

CROWN LAND USE POLICY ATLAS – POLICY REPORT

IDENTIFICATION: ID: P253

GOULAIS RIVER PROVINCIAL PARK

Area Name: Goulais River
Area (ha): 5,086
Designation: Provincial Park -
(Ontario's Living Legacy)
Category: Waterway
MNR District(s): Sault Ste. Marie

DESCRIPTION:

The 67-kilometre section of the Goulais River weaves in roughly a north-south direction from Goulais Lake in Site District 4E-3 to the Searchmont area. The park includes the Goulais River-Laverendrye Township, Goulais-Brule and Searchmont Delta natural heritage areas. Dominant land form types are 1) sloping glacial outwash landforms support forests of balsam fir, white birch, black and white spruce and sugar maple and 2) an area of steep, rugged hills with forests of white

birch, poplar, sugar maple and white spruce. A prehistoric delta, which was created at the outlet of a massive channel of glacial meltwater, can also be found within the park. The river passes through shoreline wetlands and supports a self-sustaining brook trout population. It is quite shallow in places, and includes rapids, falls, meandering sections and lakes. The waterway stretches through areas of rugged topography with some bedrock and talus slopes visible in the rolling hills. The park area

contains one authorized snowmobile trail. This area is located within the Algoma Headwaters Signature Site, one of nine such areas featured in the Ontario’s Living Legacy Land Use Strategy (1999). Signature Sites are identified for their range of natural and recreational values and their potential to contribute to future recreation and tourism.

Ragged Lake is designated as a Tourism lake within Goulais River Provincial Park.

LAND USE INTENT:

The intent is to manage this area as a provincial park waterway class.

Management of this area is governed by policies for provincial parks including direction as amended by Ontario’s Living Legacy Land Use Strategy (1999), as outlined in the Algoma Headwaters Signature Site Strategy.

MANAGEMENT DIRECTION:

Management of this provincial park is carried out in accordance with Ontario Provincial Parks: Planning and Management Policies (1992,) the Ontario’s Living Legacy Land Use Strategy (1999,) and, most significantly, the Algoma Headwaters Signature Site Strategy. This document contains significant decisions regarding resource stewardship, operations, development and permitted uses for this protected area. Where a use is given on the chart below as ‘may be’ permitted (Maybe or Yes on the table), the long-term management direction will be determined and or refined through subsequent, more detailed planning (e.g. resource plans.) The following table presents the current policies for Goulais River Provincial Park. Readers should consult the above referenced documents for specific direction or further clarification.

ACTIVITY	PERMITTED	GUIDELINES
<i>Commercial Activities</i>		
Aggregate Extraction	No	
<i>Bait Fishing</i>		
Existing:	Yes	
New:	No	
<i>Commercial Fishing</i>		
Existing:	No	
New:	No	
<i>Commercial Fur Harvesting</i>		
Existing:	Yes	
New:	No	
<i>Commercial Hydro Development</i>		
	No	
<i>Commercial Timber Harvest</i>		
	No	



ACTIVITY	PERMITTED	GUIDELINES
<i>Commercial Tourism</i> (e.g. outfitting services, outpost camps, resorts/lodges)	Existing: Yes New: No	New tourism facilities/operations will not be permitted.
<i>Energy Transmission and Communications Corridors (new)</i>	Maybe	Utility line crossings may be necessary to maintain essential public services. The number of new crossings will be discouraged and minimized where possible and they will be managed to reduce their impact on recreational and aesthetic values.
<i>Mineral Exploration and Development</i>	No	
<i>Wild Rice Harvesting</i>	Existing: N/A New: No	
Land and Resource Management Activities		
<i>Crown Land Disposition</i>		
Private Use:	No	No land disposition for the private use of individuals is permitted, except for minor dispositions in support of existing uses (e.g., reconstruction of a septic system). Renewal of existing tenure for authorized uses is permitted.
Commercial Use:	Maybe	Land disposition for commercial use may occur, under the authority of a land use permit or lease, subject to approval through planning.
<i>Fire Suppression</i>	Maybe	Natural fire suppression is subject to further planning or an approved fire strategy. All human caused fires will be suppressed.
<i>Fish Habitat Management</i>	Maybe	May be considered through fisheries planning.
<i>Fish Stocking</i>		
Native Species:	Maybe	May be considered through fisheries planning.
Non-Native Species:	No	

ACTIVITY	PERMITTED	GUIDELINES
<i>Insect/disease Suppression</i>	Maybe	May be considered through vegetation planning.
<i>Inventory/Monitoring</i>	Yes	
<i>Personal use permits for wood harvesting</i>	No	
<i>Prescribed Burning</i>	Maybe	May be considered through fire planning.
<i>Roads (non-park use)</i> Existing:	Maybe	Where existing roads are essential for continued access beyond the park for forest management or recreation purposes, and alternative road access does not exist, or road relocation is not feasible, existing roads will continue to be available for access. Continued use will include maintenance and may include future upgrading. Where other existing access roads are essential for continued access to in-holdings (i.e. Land Use Permits, patent land, etc.) within or beyond the park boundary, and alternative road access does not exist, or road relocation is not feasible, existing roads will continue to be available for access. Continued use will include maintenance. SFL roads agreement with Ontario Parks describes the management of park crossings. The number of crossings will be minimized where possible and they will be managed to reduce their impact on recreational and aesthetic values.
New:	Maybe	
<i>Vegetation Management</i>	Maybe	May be considered through vegetation planning.
<i>Water Control Structure</i> Existing:	Maybe	In some circumstances, the intent may be to remove existing water control structures over time. New structures may be considered through planning.
New:	Maybe	
<i>Wildlife Population Management</i>	Maybe	May be considered through planning.

ACTIVITY	PERMITTED	GUIDELINES
Science, Education and Heritage Appreciation		
<i>Demonstration</i>	Maybe	May be considered
<i>Photography and Painting</i>	Yes	
<i>Nature Appreciation – self guided</i>	Maybe	Support facilities to be identified through site planning.
<i>Historical Appreciation – self guided</i>	Maybe	Support facilities to be identified through site planning.
<i>Research</i>	Yes	Subject to authorization by Ontario Parks
<i>Wildlife Viewing</i>	Yes	
Recreation Activities and Facilities		
<i>Aircraft Landing (water)</i>	Yes	With authorized landing permit from Ontario Parks
<i>All Terrain Vehicle Use</i>		
On Trails:	Maybe	All-terrain-vehicle use can continue only on existing authorized trails (refer to Algoma Headwaters Signature Site Management Strategy)
Off Trails:	No	
<i>Camping</i>	Maybe	Camping is permitted at designated sites only (refer to Algoma Headwaters Signature Site Strategy)
<i>Horseback Riding (trail)</i>	Maybe	
<i>Hunting</i>	Yes	Hunting is permitted, except in Nature Reserve zones, in accordance with Ontario Hunting Regulations
<i>Mountain Bike Use</i>	Maybe	
<i>Motor Boat Use</i>		
Private:	Yes	
Commercial:	Yes	
<i>Non-motorized Recreational Travel</i>	Yes	

ACTIVITY	PERMITTED	GUIDELINES
<i>Private Recreation Camps (Hunt Camps)</i>		
Existing:	Yes	Existing authorized camps permitted to continue, and are eligible for enhanced tenure, but not purchase of land.
New:	No	
<i>Rock Climbing</i>	Maybe	Rock climbing is permitted only in areas designated for that purpose by the Park Superintendent as per O.Reg 952/01, s. 5.1 under the Provincial Parks Act.
<i>Sailing and Sailboarding</i>	Yes	
<i>Scuba and Skin Diving</i>	Yes	
<i>Snowmobiling</i>		
On Trails:	Maybe	Snowmobile use may continue on existing authorized trails (refer to Algoma Headwaters Signature Site Strategy)
Off Trails:	No	
<i>Sport Fishing</i>	Yes	Consult the Ontario Recreational Fishing Regulations Summary for specific local details.
<i>Trail Development</i>	Maybe	New trails may be considered through planning.

Note: The policies in this table do not supersede any Aboriginal or treaty rights that may exist, or other legal obligations.

Management of this provincial park is carried out within the context of provincial park policy, as amended by the policies for existing provincial parks outlined in the Ontario's Living Legacy Land Use Strategy.

SOURCE OF DIRECTION:

Algoma Headwaters Signature Site Interim Management Statement (2001)
 Ontario's Living Legacy Land Use Strategy (1999)
 Ontario Provincial Parks: Planning and Management Policies (1992)

EXPLANATION OF EDITS:

This Policy Report has been updated to reflect proposed changes to management and permitted uses for this protected area, as outlined in the Algoma Headwaters Signature Site Preliminary Strategy

CROWN LAND USE POLICY ATLAS – POLICY REPORT

IDENTIFICATION: ID: P277

AUBINADONG-NUSHATOGAINI RIVERS

Area Name: Aubinadong-Nushatogaini
Rivers

Area (ha): 4,928

Designation: Provincial Park -
(Ontario's Living Legacy)

Category: Waterway

MNR District(s): Sault Ste. Marie

DESCRIPTION:

The Aubinadong-Nushatogaini Rivers waterway is composed of an 85-kilometre network of river and lake sections, including flat and white water stretches. The waterway is connected to Algoma Headwaters Provincial Park and drains Megisan Lake. The rivers are small sand-bottomed drainages, with small bedrock-controlled rapids in some sections. This area is located within the Algoma Headwaters Signature Site, one of nine such areas featured in the Ontario's Living Legacy Land Use Strategy (1999). Signature Sites are identified for their range of natural and recreational values and their potential to contribute to future recreation and tourism.

Gong Lake is designated as a tourism lake within Aubinadong-Nushatogaini Provincial Park.

LAND USE INTENT:

Forest management planning will provide for one water crossing of the Aubinadong-Nushatogaini River system for forestry activities on adjacent Crown lands. The intent is to manage this area as a provincial park waterway class. Management of this area is also governed by policies for provincial parks including direction, as amended by Ontario's Living Legacy Land Use Strategy (1999,) and, most significantly, the Algoma Headwaters Signature Site Strategy.

MANAGEMENT DIRECTION:

Management of this provincial park is carried out in accordance with Ontario Provincial Parks: Planning and Management Policies (1992), the Ontario's Living Legacy Land Use Strategy (1999) and the Algoma Headwaters Signature Site Strategy. Where a use is given on the chart below as "may be permitted" (Maybe or Yes on the table) the long-term management direction may be determined through subsequent, more detailed planning such as resource plans. The following table reflects the current policies for the Aubinadong-Nushatogaini Rivers Provincial Parks, as presented in the Algoma Headwaters Signature Site Strategy. Readers should consult the above referenced documents for specific direction or further clarification.

ACTIVITY	PERMITTED	GUIDELINES
<i>Commercial Activities</i>		
<i>Aggregate Extraction</i>	No	
<i>Bait Fishing</i>		
Existing:	Yes	
New:	No	
<i>Commercial Fishing</i>		
Existing:	No	
New:	No	
<i>Commercial Fur Harvesting</i>		
Existing:	Yes	
New:	No	
<i>Commercial Hydro Development</i>		
	No	
<i>Commercial Timber Harvest</i>		
	No	
<i>Commercial Tourism</i> (e.g. outfitting services, outpost camps, resorts/lodges)		
Existing:	Yes	Existing authorized facilities and operations are permitted to continue. Existing tourism facilities may be eligible for enhanced tenure but not purchase of land.
New:	No	New tourism facilities/operations will not be permitted.
<i>Energy Transmission and Communications Corridors (new)</i>		
	Maybe	Utility line crossings may be necessary to maintain essential public services. The number of new crossings will be minimized where possible and they will be managed to reduce their impact on recreational and aesthetic values.
<i>Mineral Exploration and Development</i>		
	No	
<i>Wild Rice Harvesting</i>		
Existing:	N/A	
New:	No	

ACTIVITY	PERMITTED	GUIDELINES
<i>Land and Resource Management Activities</i>		
<i>Crown Land Disposition</i>		
Private Use:	No	No land disposition for the private use of individuals is permitted, except for minor dispositions in support of existing uses (e.g., reconstruction of a septic system). Renewal of existing tenure for authorized uses is permitted.
Commercial Use:	Maybe	Land disposition for commercial use may occur, under the authority of a land use permit or lease, subject to approval through planning.
<i>Fire Suppression</i>	Maybe	Natural fire suppression is subject to further planning or an approved fire strategy. All human caused fires will be suppressed.
<i>Fish Habitat Management</i>	Maybe	May be considered through fisheries planning.
<i>Fish Stocking</i>		
Native Species:	Maybe	May be considered through fisheries planning.
Non-Native Species:	No	
<i>Insect/disease Suppression</i>	Maybe	May be considered through vegetation planning.
<i>Inventory/Monitoring</i>	Yes	
<i>Personal use permits for wood harvesting</i>	No	
<i>Prescribed Burning</i>	Maybe	May be considered through fire planning.
<i>Roads (non-park use)</i>		
Existing:	Maybe	Where existing roads are essential for continued access beyond the park for forest management or recreation purposes, and alternative road access does not exist, or road relocation is not feasible, existing roads will continue to be available for access. Continued use will include maintenance and may include future upgrading. Where other existing access roads are essential for continued access to in-holdings (i.e. Land Use Permits, patent land, etc.) within or beyond the park boundary, and alternative road access does not exist, or road relocation is not feasible, existing roads will continue to be available
New:	Maybe	

ACTIVITY	PERMITTED	GUIDELINES
		for access. Continued use will include maintenance. SFL roads agreement with Ontario Parks describes the management of park crossings. The number of crossings will be minimized where possible and they will be managed to reduce their impact on recreational and aesthetic values. Access may also be required for mineral exploration and development on forest reserves within the provincial park.
<i>Vegetation Management</i>	Maybe	May be considered through vegetation planning.
<i>Water Control Structure</i>		
Existing:	Maybe	In some circumstances, the intention may be to remove existing water control structures over time. New structures may be considered through planning.
New:	Maybe	
<i>Wildlife Population Management</i>	Maybe	May be considered through wildlife planning.
<i>Science, Education and Heritage Appreciation Demonstration</i>	Maybe	May be considered through site planning.
<i>Historical Appreciation – self guided</i>	Maybe	Support facilities to be identified through site planning.
<i>Nature Appreciation – self guided</i>	Maybe	Support facilities to be identified through site planning.
<i>Photography and Painting</i>	Yes	Support facilities to be identified through planning.
<i>Research</i>	Yes	Subject to authorization by Ontario Parks
<i>Wildlife Viewing</i>	Yes	
<i>Recreation Activities and Facilities</i>		
<i>Aircraft Landing (water)</i>	Yes	With authorized landing permit from Ontario Parks
<i>All Terrain Vehicle Use</i>		
On Trails:	Maybe	All-terrain-vehicle use can continue on existing authorized trails (refer to Algoma Headwaters Signature Site Strategy)

ACTIVITY	PERMITTED	GUIDELINES
Off Trails:	No	
<i>Camping</i>	Maybe	Camping is permitted at designated sites only (refer to Algoma Headwaters Signature Site Strategy)
<i>Horseback Riding (trail)</i>	Maybe	
<i>Hunting</i>	Yes	Hunting is permitted, except in Nature Reserve zones, in accordance with Ontario Hunting Regulations
<i>Mountain Bike Use</i>	Maybe	
Motor Boat Use		
Private:	Yes	
Commercial:	Yes	
<i>Non-motorized Recreation Travel</i>	Yes	
<i>Private Recreation Camps (Hunt Camps)</i>		
Existing:	Yes	Existing authorized camps permitted to continue, eligible for enhanced tenure but not purchase of land.
New:	No	
<i>Rock Climbing</i>	Maybe	Rock climbing is permitted only in areas designated for that purpose by the park superintendent as per O.Reg 952/01, s. 5.1 under the Provincial Parks Act
<i>Sailing and Sailboarding</i>	Yes	
<i>Scuba and Skin Diving</i>	Yes	
<i>Snowmobiling</i>		
On Trails:	Maybe	Snowmobile use may continue on existing authorized trails only (refer to Algoma Headwaters Signature Site Strategy)
Off Trails:	No	

ACTIVITY	PERMITTED	GUIDELINES
<i>Sport Fishing</i>	Yes	Consult the Ontario Recreational Fishing Regulations Summary for specific local details.
<i>Trail Development</i>	Maybe	New trails may be considered through planning.

Note: The policies in this table do not supersede any Aboriginal or treaty rights that may exist, or other legal obligations.

Management of this provincial park is carried out within the context of provincial park policy as amended by the policies for existing provincial parks outlined in the Ontario's Living Legacy Land Use Strategy.

SOURCE OF DIRECTION:

Aubinadong- Nushatogaini Rivers Interim Management Statement (2001)
 Ontario's Living Legacy Land Use Strategy (1999)
 Ontario Provincial Parks: Planning and Management Policies (1992)
 Signature Site Interim Management Statement 2001

EXPLANATION OF EDITS:

This Policy Report has been updated to reflect proposed changes to management and permitted uses for this protected area, as outlined in the Algoma Headwaters Signature Site Preliminary Strategy



CROWN LAND USE POLICY ATLAS – POLICY REPORT

(Note: this Policy Report will be updated in 2005
by SSM District MNR)

C1914 RANGER NORTH CONSERVATION RESERVE

IDENTIFICATION: ID: C1914

Area Name: Ranger North
Area (ha): 7,032
Designation: Conservation Reserve
MNR District(s): Sault Ste. Marie

DESCRIPTION:

The Ranger North Conservation Reserve is located approximately 80 kilometres north of the City of Sault Ste. Marie in the townships of Gapp, Gaudry, Wlasy, Bracci, Schembri and Scriven. This site is unique in that it is situated within the 100-kilometre wide transition zone between the Boreal forest to the north, and the Great Lakes - St. Lawrence forest to the south. The conservation reserve contains the largest identified area of old-growth white and red pine forest in northeastern Ontario, which is centred around Quinn Lake, Bliss Lake, and the eastern half of Galloway Lake. This is estimated to be one of the oldest pine forest complexes in Ontario, with some pines estimated at more than 350 years old. Cedar, hemlock, yellow birch, hard maple, white birch, black spruce, and balsam fir are also present. Additionally, the reserve is considered to be a provincially significant example of a landform unit described as moderately broken shallow sandy till uplands, with weakly broken outwash in the valleys. This area is located within the Algoma Headwaters Signature Site, one of nine such areas featured in the Ontario's Living Legacy Land Use Strategy (1999.) Signature Sites are identified for their range of natural and recreational values and their potential to contribute to future recreation and tourism. Ranger North was regulated as a conservation reserve on February 20, 1997.

LAND USE INTENT:

This area accommodates a variety of recreational activities such as camping, wildlife viewing, hiking, skiing, fishing and hunting. It is considered to have high recreational values, due in part to limited road access and the resulting remote experience it affords. Due to the proximity of the Algoma Headwaters Provincial Park (P273,) which abuts the conservation reserve to the south and west, this site will be considered to be part of the Algoma Headwaters Signature Site and will be considered included within the signature site planning process.

MANAGEMENT DIRECTION:

Those uses and management activities not listed in the following table are governed by existing conservation reserve policy and Public Lands Act, PL 3.03.05, and the Ranger North Conservation Reserve Statement of Conservation Interest (March 1999.) Any new uses, and commercial activities associated with conservation reserves, will be considered on a case by case basis, and they must pass a "test of compatibility" to be acceptable. Compatibility is normally determined through a planning process.

ACTIVITY	PERMITTED	GUIDELINES
Commercial Activities		
<i>Aggregate Extraction</i>	No	
Bait Fishing		
Existing:	No	Baitfish harvesting not permitted; harvest of other bait types (e.g. leeches, crayfish) may be permitted.
New:	No	
Commercial Fishing		
Existing:	No	Existing use permitted to continue, unless there are significant demonstrated conflicts.
New:	No	New operations can be considered, subject to the “test of compatibility”.
Commercial Fur Harvesting		
Existing:	Yes	Existing use permitted to continue, unless there are significant demonstrated conflicts. Existing trap cabins can continue; new cabins are not permitted.
New:	No	
<i>Commercial Hydro Development</i>	No	
<i>Commercial Timber Harvest</i>	No	
Commercial Tourism		
Existing:	No	
New:	No	
Bear Hunting by Non-residents (guided)		
Existing:	Yes	Existing authorized operations permitted to continue.
New:	No	New operations are not permitted.
Outfitting Services		
Existing:	No	
New:	No	
Outpost Camps		
Existing:	No	Outpost on island in Quinn Lake is on patented land
New:	No	

ACTIVITY	PERMITTED	GUIDELINES
<i>Resorts/lodges</i>		
Existing:	No	
New:	No	
<i>Energy Transmission and Communications Corridors</i>		
Existing:	Yes	These facilities should avoid conservation reserve lands wherever possible. The construction of new transmission lines, pipelines, and similar lineal developments will be strongly discouraged, as will expansion of utility line rights-of-way.
New:	No	
<i>Food Harvesting (Commercial)</i>		
Existing:	No	
New:	No	
<i>Mineral Exploration and Development</i>		
	No	
<i>Peat Extraction</i>		
	No	
<i>Wild Rice Harvesting</i>		
Existing:	No	
New:	No	
<i>Land and Resource Management Activities</i>		
<i>Crown Land Disposition</i>		
Private Use:	Maybe	Sale of lands is not permitted. Renewals of existing leases and land use permits are permitted. Requests for transfer of tenure will be considered in the context of the Statement of Conservation Interest or Resource Management Plan. New leases or land use permits permitted for approved activities.
Commercial Use:	Maybe	
<i>Fire Suppression</i>		
	Yes	Fire suppression policies are similar to adjacent Crown lands, unless alternative fire policies have been developed through a planning process.
<i>Fish Habitat Management</i>		
	Maybe	

ACTIVITY	PERMITTED	GUIDELINES
<i>Fish Stocking</i>	Maybe	Conservation Reserves policy indicates that “featured species management” may be permitted. Fisheries and wildlife will continue to be managed in accordance with policies and regulations prevailing in the area.
<i>Insect/disease Suppression</i>	Maybe	Programs may be developed to control forest insects and diseases where these threaten significant heritage, aesthetic, or economic values. Where control is desirable, it will be directed as narrowly as possible to the specific insect or disease. Biological control will be pursued wherever possible.
<i>Inventory/Monitoring</i>	Yes	
<i>Prescribed Burning</i>	Maybe	The use of fire for management purposes must be approved through a Resource Management Plan.
<i>Roads (Resource Access)</i>		
Existing:	Yes	Existing resource access roads can continue to be used.
New:	No	
<i>Vegetation Management</i>	Maybe	Conservation Reserves policy indicates that Featured Species Management and Natural Systems Management may be permitted. Vegetation management can be considered in a planning process.
<i>Wildlife Population Management</i>	Yes	Wildlife management will be in accordance with policies and regulations prevailing in the area.
<i>Science, Education and Heritage Appreciation</i>		
<i>Collecting</i>	Maybe	Will be considered on a case-by-case basis.
<i>Historical Appreciation</i>	Yes	
<i>Nature Appreciation</i>	Yes	
<i>Photography and Painting</i>	Yes	
<i>Research</i>	Yes	
<i>Wildlife Viewing</i>	Yes	

ACTIVITY	PERMITTED	GUIDELINES
<i>Recreation Activities and Facilities</i>		
<i>All Terrain Vehicle Use</i>		
On Trails:	Yes	Existing use permitted to continue where it does not adversely affect the values being protected.
Off Trails:	No	ATV use off trails is not permitted except for direct retrieval of game
<i>Campgrounds</i>	Maybe	Will be considered only on sites outside of the old growth areas.
<i>Food Gathering</i>	Yes	
<i>Horseback Riding (trail)</i>	Yes	Existing use on trails permitted.
<i>Hunting</i>	Yes	
<i>Mountain Bike Use</i>	Yes	Existing use on trails permitted.
<i>Motor Boat Use</i>		
Commercial:	Yes	
Private:	Yes	
<i>Non-motorized Recreation Travel</i>	Yes	
<i>Private Recreation Camps (Hunt Camps)</i>		
Existing:	Yes	Existing camps permitted to continue, and may be eligible for enhanced tenure, but not purchase of land.
New:	No	New camps will not be permitted.
<i>Rock Climbing</i>	Yes	
<i>Snowmobiling</i>		
On Trails:	Yes	
Off Trails:	No	Except for direct retrieval of game
<i>Sport Fishing</i>	Yes	
<i>Trail Development</i>		
Existing:	Yes	Development of trails for a variety of activities (e.g. hiking, cross-country skiing, cycling, horseback riding, snowmobiling) can be considered through a planning process.
New:	Maybe	

Note: The policies outlined in this table do not supersede any Aboriginal or treaty rights that may exist, or other legal obligations.

Management of this Conservation Reserve is carried out within the context of Conservation Reserve policy, as amended by Ontario's Living Legacy Land Use Strategy.

SOURCE OF DIRECTION:

- Ranger North Conservation Reserve Statement of Conservation Interest (March 1999)
- Ontario's Living Legacy Land Use Strategy (1999)
- Conservation Reserves Policy (1997)

EXPLANATION OF EDITS:

No edits; as per Ranger North Statement of Conservation Interest (1999)



LIST OF FIGURES

FIGURE 1: REGIONAL CONTEXT.....83
FIGURE 2: PROTECTED AREA DESIGNATIONS84
FIGURE 3: EXISTING DEVELOPMENT.....85
FIGURE 4: TRAPLINES86
FIGURE 5: BEAR MANAGEMENT AREAS87
FIGURE 6: ZONING88

